

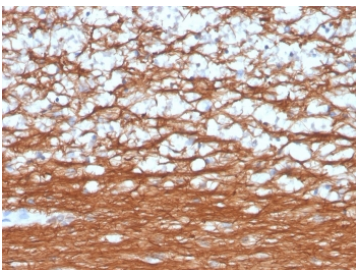
PGP9.5 Antibody / Neuroendocrine Tumor Marker Antibody [clone rUCHL1/4557] (V8654)

Catalog No.	Formulation	Size
V8654-100UG	0.2 mg/ml in 1X PBS with 0.1 mg/ml BSA (US sourced) and 0.05% sodium azide	100 ug
V8654-20UG	0.2 mg/ml in 1X PBS with 0.1 mg/ml BSA (US sourced) and 0.05% sodium azide	20 ug
V8654SAF-100UG	1 mg/ml in 1X PBS; BSA free, sodium azide free	100 ug

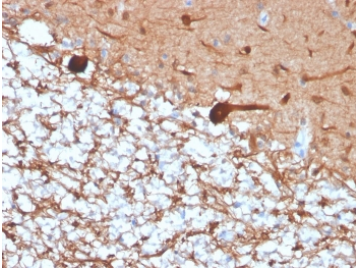
Recombinant **MOUSE MONOCLONAL**

[Bulk quote request](#)

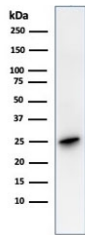
Availability	1-3 business days
Species Reactivity	Human
Format	Purified
Host	Mouse
Clonality	Recombinant Mouse Monoclonal
Isotype	Mouse IgG2a, kappa
Clone Name	rUCHL1/4557
Purity	Protein G affinity chromatography
UniProt	P09936
Localization	Cytoplasmic, ER membrane
Applications	Western Blot : 1-2ug/ml Immunohistochemistry (FFPE) : 1-2ug/ml for 30 minutes at RT
Limitations	This recombinant PGP9.5 antibody is available for research use only.



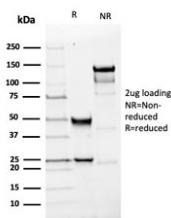
PGP9.5 Antibody / Neuroendocrine Tumor Marker Antibody. Immunohistochemistry analysis of PGP9.5 / UCHL1 in FFPE human cerebellum. IHC staining of FFPE human cerebellum using PGP9.5 Antibody / Neuroendocrine Tumor Marker Antibody demonstrates strong HRP-DAB brown cytoplasmic labeling of neuronal cells and extensive neuritic processes, reflecting the neuroendocrine-associated expression profile of UCHL1. The staining highlights dense neuronal networks that parallel expression patterns observed in neuroendocrine tumors, where PGP9.5 is commonly used as a tumor marker for identifying cells with neuroendocrine differentiation. Clone rUCHL1/4557 supports visualization of neuroendocrine-associated cellular features, with minimal staining in non-neuronal elements.



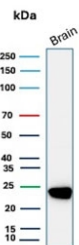
PGP9.5 Antibody / Neuroendocrine Tumor Marker Antibody. Immunohistochemistry analysis of PGP9.5 / UCHL1 in FFPE human cerebellum. Immunohistochemical staining of FFPE human cerebellum using PGP9.5 Antibody / Neuroendocrine Tumor Marker Antibody shows robust HRP-DAB brown cytoplasmic signal in neuronal cell bodies and extensive neuritic networks, consistent with the neuroendocrine-linked expression of UCHL1. The staining pattern mirrors features commonly observed in neuroendocrine tumors, where PGP9.5 is used to identify tumor cells with neuroendocrine differentiation and lineage characteristics. Clone rUCHL1/4557 enables clear visualization of neuroendocrine-associated cellular morphology while surrounding non-neuronal cells display minimal background staining.



Western blot testing of human brain lysate with recombinant PGP9.5 antibody. Predicted molecular weight ~25 kDa.



SDS-PAGE analysis of purified, BSA-free recombinant PGP9.5 antibody (clone rUCHL1/4557) as confirmation of integrity and purity.



PGP9.5 Antibody / Neuroendocrine Tumor Marker Antibody for WB. Western blot analysis of PGP9.5 / UCHL1 in human brain lysate. Lane 1: human brain lysate. A band is detected at approximately 25 kDa, consistent with the predicted molecular weight of Protein gene product 9.5 / UCHL1. The strong signal observed in brain tissue reflects the high neuronal expression of this protein, which underlies its widespread use as a neuroendocrine tumor marker for identifying cells with neuroendocrine differentiation.

Description

Protein gene product 9.5 (PGP9.5), also known as Ubiquitin C-terminal hydrolase L1 (UCHL1), is a cytoplasmic protein widely expressed in neurons and strongly associated with neuroendocrine differentiation in tumor tissues. The PGP9.5 Antibody / Neuroendocrine Tumor Marker Antibody (clone rUCHL1/4557) is specifically suited for detection of neuroendocrine tumors, supporting identification of tumor cells that exhibit neuronal or neuroendocrine lineage characteristics.

PGP9.5 Antibody, also referred to as UCHL1 antibody or ubiquitin C-terminal hydrolase L1 antibody, is frequently used as a neuroendocrine tumor marker in pathology-oriented studies. Its expression is observed across a range of neuroendocrine tumors, including those arising from neural crest-derived and neuroectodermal lineages. This makes it particularly valuable for distinguishing neuroendocrine tumors from non-neuroendocrine malignancies and for evaluating tumor differentiation status within heterogeneous cancer samples.

This recombinant mouse monoclonal PGP9.5 Antibody (clone rUCHL1/4557) enables clear cytoplasmic detection of

UCHL1 in tumor cells, supporting visualization of neuroendocrine tumor cell populations within complex tissue environments. The staining pattern helps define tumor cell distribution and highlights regions of neuroendocrine differentiation, which is critical for tumor classification and comparative analysis across samples.

PGP9.5 expression is closely linked to neuroendocrine tumor biology, where it reflects differentiation toward neuronal or neuroendocrine phenotypes. Its detection is commonly integrated into multi-marker panels used to characterize neuroendocrine tumors and assess lineage identity. The ability to detect UCHL1 alongside other tumor markers enhances interpretation of tumor subtype, cellular origin, and biological behavior in research settings.

A PGP9.5 Antibody / Neuroendocrine Tumor Marker Antibody (clone rUCHL1/4557) is ideally suited for studies focused on neuroendocrine tumors, tumor differentiation analysis, and pathology-based tumor profiling. Its strong positioning as a neuroendocrine tumor marker clearly differentiates it from general neuronal antibodies and supports targeted investigation of neuroendocrine cancer biology.

Application Notes

Optimal dilution of the PGP9.5 Antibody / Neuroendocrine Tumor Marker Antibody should be determined by the researcher.

Immunogen

Recombinant full-length human protein was used as the immunogen for the PGP9.5 Antibody / Neuroendocrine Tumor Marker Antibody.

Storage

Store the recombinant PGP9.5 antibody at 2-8oC (with azide) or aliquot and store at -20oC or colder (without azide).

Alternate Names

UCHL1 antibody, PGP9.5 antibody, Ubiquitin C-terminal hydrolase L1 antibody, Neuroendocrine marker PGP9.5 antibody