

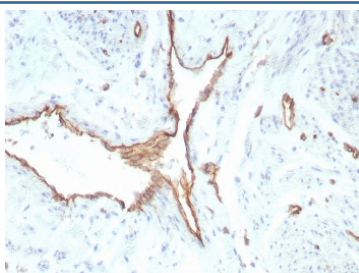
## Recombinant PECAM1 Antibody / CD31 [clone rPECAM1/8829] (V4510)

Catalog No.	Formulation	Size
V4510-100UG	0.2 mg/ml in 1X PBS with 0.1 mg/ml BSA (US sourced), 0.05% sodium azide	100 ug
V4510-20UG	0.2 mg/ml in 1X PBS with 0.1 mg/ml BSA (US sourced), 0.05% sodium azide	20 ug
V4510SAF-100UG	1 mg/ml in 1X PBS; BSA free, sodium azide free	100 ug

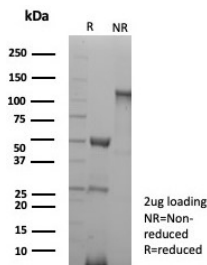
Recombinant **MOUSE MONOCLONAL**

[Bulk quote request](#)

<b>Availability</b>	1-3 business days
<b>Species Reactivity</b>	Human
<b>Format</b>	Purified
<b>Host</b>	Mouse
<b>Clonality</b>	Recombinant Mouse Monoclonal
<b>Isotype</b>	Mouse IgG1, kappa
<b>Clone Name</b>	rPECAM1/8829
<b>Purity</b>	Protein A/G affinity
<b>UniProt</b>	P16284
<b>Localization</b>	Cell surface, Cytoplasm
<b>Applications</b>	Immunohistochemistry (FFPE) : 1-2ug/ml for 30 min at RT
<b>Limitations</b>	This recombinant PECAM1 antibody is available for research use only.



IHC staining of FFPE human uterus tissue with recombinant PECAM1 antibody (clone rPECAM1/8829). HIER: boil tissue sections in pH 9 10mM Tris with 1mM EDTA for 20 min and allow to cool before testing.



SDS-PAGE analysis of purified, BSA-free recombinant PECAM1 antibody (clone rPECAM1/8829) as confirmation of integrity and purity.

## Description

CD31 (PECAM-1) is a transmembrane glycoprotein member of the immunoglobulin supergene family of adhesion molecules. CD31 is expressed by stem cells of the hematopoietic system and is primarily used to identify and concentrate these cells for experimental studies as well as for bone marrow transplantation. Anti-CD31 has shown to be highly specific and sensitive for vascular endothelial cells. Staining of nonvascular tumors (excluding hematopoietic neoplasms) is rare. CD31 mAb reacts with normal, benign, and malignant endothelial cells which make up blood vessel lining. The level of CD31 expression can help to determine the degree of tumor angiogenesis, and a high level of CD31 expression may imply a rapidly growing tumor and potentially a predictor of tumor recurrence.

## Application Notes

Optimal dilution of the recombinant PECAM1 antibody should be determined by the researcher.

## Immunogen

A recombinant partial protein sequence (within amino acids 625-738) from the human protein was used as the immunogen for the recombinant PECAM1 antibody.

## Storage

Aliquot the recombinant PECAM1 antibody and store frozen at -20°C or colder. Avoid repeated freeze-thaw cycles.