

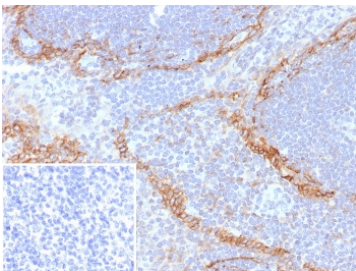
Recombinant PDPN Antibody / Podoplanin / Gp36 [clone rPDPN/6994] (V4681)

Catalog No.	Formulation	Size
V4681-100UG	0.2 mg/ml in 1X PBS with 0.1 mg/ml BSA (US sourced), 0.05% sodium azide	100 ug
V4681-20UG	0.2 mg/ml in 1X PBS with 0.1 mg/ml BSA (US sourced), 0.05% sodium azide	20 ug
V4681SAF-100UG	1 mg/ml in 1X PBS; BSA free, sodium azide free	100 ug

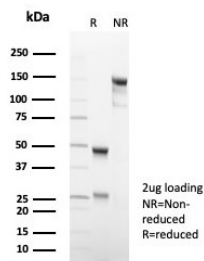
Recombinant **MOUSE MONOCLONAL**

[Bulk quote request](#)

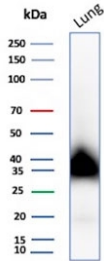
Availability	1-3 business days
Species Reactivity	Human
Format	Purified
Host	Mouse
Clonality	Recombinant Mouse Monoclonal
Isotype	Mouse IgG1, kappa
Clone Name	rPDPN/6994
Purity	Protein A/G affinity
UniProt	Q86YL7
Localization	Cell Surface, Cytoplasm
Applications	Immunohistochemistry (FFPE) : 1-2ug/ml for 30 min at RT Western Blot : 2-4ug/ml
Limitations	This recombinant PDPN antibody is available for research use only.



IHC staining of FFPE human tonsil tissue with recombinant PDPN antibody (clone rPDPN/6994). Inset: PBS used in place of primary Ab (secondary Ab negative control).
HIER: boil tissue sections in pH 9 10mM Tris with 1mM EDTA for 20 min and allow to cool before testing.



SDS-PAGE analysis of purified, BSA-free recombinant PDPN antibody (clone rPDPN/6994) as confirmation of integrity and purity.



Western blot testing of human lung tissue lysate with recombinant PDPN antibody. Predicted molecular weight ~25 kDa but may be observed at higher molecular weights due to glycosylation.

Description

It recognizes a muco-protein of 38-43kDa, which is identified as Podoplanin (PDPN). It localizes in stromal cells of peripheral lymphoid tissue and thymic epithelial cells. As a regulator of the lymphatic endothelium, podoplanin probably plays a role in maintaining the unique shape of podocytes. It is selectively expressed in lymphatic endothelium as well as lymphoangiomas, Kaposi sarcomas, and in a subset of angiosarcomas with probable lymphatic differentiation. Recent studies have also shown podoplanin to be a highly sensitive and relatively specific marker for epithelioid mesothelioma. Therefore, it can be used in a panel to distinguish mesotheliomas or mesothelial cells from pulmonary carcinomas.

Application Notes

Optimal dilution of the recombinant PDPN antibody should be determined by the researcher.

Immunogen

A recombinant human Podoplanin protein fragment (within amino acids 1-100) was used as the immunogen for the recombinant PDPN antibody.

Storage

Aliquot the recombinant PDPN antibody and store frozen at -20oC or colder. Avoid repeated freeze-thaw cycles.