

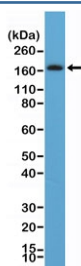
Recombinant PDGFRB Antibody / C-Terminal [clone RM303] (R20325)

Catalog No.	Formulation	Size
R20325-0.1ML	Antibody in PBS with 50% glycerol, 1% BSA and 0.09% sodium azide	100 ul

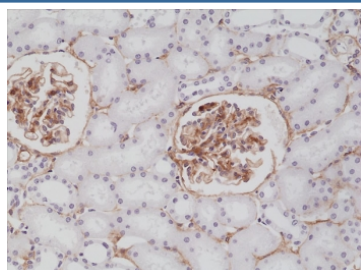
Recombinant **RABBIT MONOCLONAL**

[Bulk quote request](#)

Availability	1-3 business days
Species Reactivity	Human
Format	Purified
Host	Rabbit
Clonality	Recombinant Rabbit Monoclonal
Isotype	Rabbit IgG
Clone Name	RM303
Purity	Protein A purified from animal origin-free supernatant
UniProt	P09619
Localization	Cell membrane, cytoplasm
Applications	Immunohistochemistry (FFPE) : 1:100-1:200 Western Blot : 1:100-1:200
Limitations	This recombinant PDGFRB antibody is available for research use only.



Western blot testing of human brain tissue lysate with recombinant PDGFRB antibody at 1:100. Expected molecular weight: 123-190 kDa depending on level of glycosylation.



IHC testing of formalin fixed and paraffin embedded human kidney tissue with recombinant PDGFRB antibody at 1:200 dilution. HIER: steam section in pH6 citrate buffer for 20 min and allow to cool prior to staining.

Description

This antibody reacts to human CD140b (Platelet-derived growth factor receptor beta).

Application Notes

The stated application concentrations are suggested starting points. Titration of the recombinant PDGFRB antibody may be required due to differences in protocols and secondary/substrate sensitivity.

Immunogen

A peptide corresponding to the C-terminus of human CD140b/PDGFRB was used as the immunogen for the recombinant PDGFRB antibody.

Storage

Store the recombinant PDGFRB antibody at -20oC.