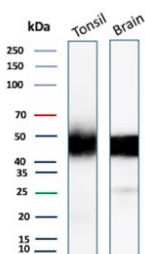


## Recombinant PDCD1 Antibody / PD-1 / PD1 [clone PDCD1/7125] (V4042)

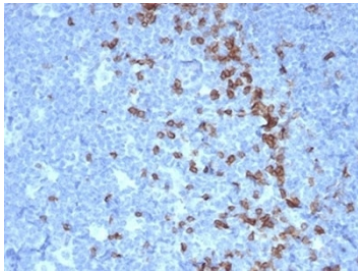
Catalog No.	Formulation	Size
V4042-100UG	0.2 mg/ml in 1X PBS with 0.1 mg/ml BSA (US sourced), 0.05% sodium azide	100 ug
V4042-20UG	0.2 mg/ml in 1X PBS with 0.1 mg/ml BSA (US sourced), 0.05% sodium azide	20 ug
V4042SAF-100UG	1 mg/ml in 1X PBS; BSA free, sodium azide free	100 ug

[Bulk quote request](#)

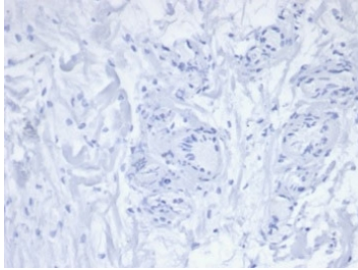
<b>Availability</b>	1-3 business days
<b>Species Reactivity</b>	Human
<b>Format</b>	Purified
<b>Clonality</b>	Monoclonal (mouse origin)
<b>Isotype</b>	Mouse IgG1, kappa
<b>Clone Name</b>	PDCD1/7125
<b>Purity</b>	Protein A/G affinity
<b>UniProt</b>	Q15116
<b>Localization</b>	Cell surface, cytoplasm
<b>Applications</b>	Western Blot : 2-4ug/ml Immunohistochemistry (FFPE) : 1-2ug/ml
<b>Limitations</b>	This recombinant PDCD1 antibody is available for research use only.



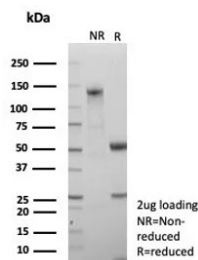
Western blot testing of human tonsil and brain tissue lysate with recombinant PDCD1 antibody. Predicted molecular weight: 32-55 kDa depending on glycosylation level.



IHC staining of FFPE human tonsil tissue with recombinant PDCD1 antibody (clone PDCD1/7125). HIER: boil tissue sections in pH 9 10mM Tris with 1mM EDTA for 20 min and allow to cool before testing.



Negative control: IHC staining of FFPE human skin tissue with recombinant PDCD1 antibody (clone PDCD1/7125). HIER: boil tissue sections in pH 9 10mM Tris with 1mM EDTA for 20 min and allow to cool before testing.



SDS-PAGE analysis of purified, BSA-free recombinant PDCD1 antibody (clone PDCD1/7125) as confirmation of integrity and purity.

## Description

PDCD-1 (programmed cell death-1 protein), also designated CD279, is a type I transmembrane receptor and a member of the immunoglobulin gene superfamily. It is expressed on activated T-cells, B-cells, and myeloid cells. Anti-PDCD-1 is a marker of angioimmunoblastic lymphoma and suggests a unique cell of origin for this neoplasm. Unlike CD10 and BCL6, PDCD-1 is expressed by few B-cells, so anti-PDCD-1 may be a more specific and useful diagnostic marker in angioimmunoblastic lymphoma. In addition, PDCD-1 expression provides evidence that angioimmunoblastic lymphoma is a neoplasm derived from germinal center-associated T-cells.

## Application Notes

Optimal dilution of the recombinant PDCD1 antibody should be determined by the researcher.

## Immunogen

A portion of amino acids 1-200 from the human protein was used as the immunogen for the recombinant PDCD1 antibody.

## Storage

Aliquot the recombinant PDCD1 antibody and store frozen at -20oC or colder. Avoid repeated freeze-thaw cycles.

