

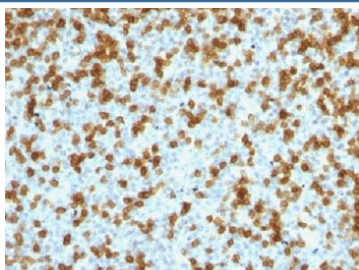
## Recombinant PD1 Antibody / Rabbit Monoclonal [clone PDCD1/1410R] (V7244)

Catalog No.	Formulation	Size
V7244-100UG	0.2 mg/ml in 1X PBS with 0.1 mg/ml BSA (US sourced) and 0.05% sodium azide	100 ug
V7244-20UG	0.2 mg/ml in 1X PBS with 0.1 mg/ml BSA (US sourced) and 0.05% sodium azide	20 ug
V7244SAF-100UG	1 mg/ml in 1X PBS; BSA free, sodium azide free	100 ug
V7244IHC-7ML	Prediluted in 1X PBS with 0.1 mg/ml BSA (US sourced) and 0.05% sodium azide; *For IHC use only*	7 ml

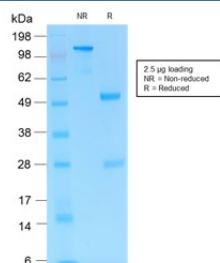
Recombinant **RABBIT MONOCLONAL**

[Bulk quote request](#)

Availability	1-3 business days
Species Reactivity	Human
Format	Purified
Clonality	Recombinant Rabbit Monoclonal
Isotype	Rabbit IgG, kappa
Clone Name	PDCD1/1410R
Purity	Protein A affinity chromatography
UniProt	Q15116
Localization	Cell surface & cytoplasmic
Applications	Immunohistochemistry (FFPE) : 1-2ug/ml for 30 min at RT
Limitations	This recombinant PD1 antibody is available for research use only.



IHC testing of FFPE human tonsil with recombinant PD1 antibody (clone PDCD1/1410R). Required HIER: steam sections in 10mM Tris with 1mM EDTA, pH 9, for 10-20 min.



SDS-PAGE analysis of purified, BSA-free recombinant PD1 antibody (clone PDCD1/1410R) as confirmation of integrity and purity.

## Description

PDCD1 (Programmed cell death-1 protein), also called PD1 and CD279, is a type I transmembrane receptor and a member of the immunoglobulin gene superfamily. It is expressed on activated T-cells, B-cells, and myeloid cells. Anti-PDCD1 is a marker of angioimmunoblastic lymphoma and suggests a unique cell of origin for this neoplasm. Unlike CD10 and BCL6, PDCD1 is expressed by few B-cells, so may be a more specific and useful diagnostic marker in angioimmunoblastic lymphoma.

## Application Notes

Titering of the recombinant PD1 antibody may be required for optimal performance.

1. The prediluted format is supplied in a dropper bottle and is optimized for use in IHC. After epitope retrieval step (if required), drip mAb solution onto the tissue section and incubate at RT for 30 min.

## Immunogen

A partial length human protein was used as the immunogen for the recombinant PD1 antibody.

## Storage

Store the recombinant PD1 antibody at 2-8°C (with azide) or aliquot and store at -20°C or colder (without azide).