

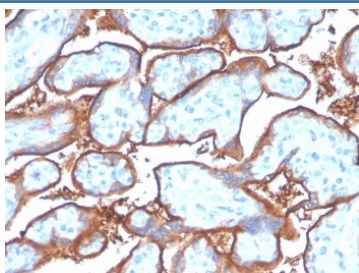
## Recombinant PD-L1 Antibody [clone PDL1/4280R] (V8640)

Catalog No.	Formulation	Size
V8640-100UG	0.2 mg/ml in 1X PBS with 0.1 mg/ml BSA (US sourced) and 0.05% sodium azide	100 ug
V8640-20UG	0.2 mg/ml in 1X PBS with 0.1 mg/ml BSA (US sourced) and 0.05% sodium azide	20 ug
V8640SAF-100UG	1 mg/ml in 1X PBS; BSA free, sodium azide free	100 ug

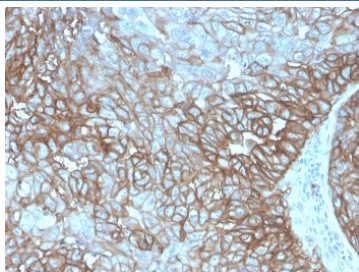
Recombinant **RABBIT MONOCLONAL**

[Bulk quote request](#)

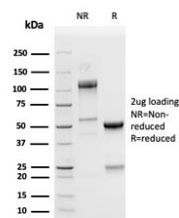
Availability	1-3 business days
Species Reactivity	Human
Format	Purified
Host	Rabbit
Clonality	Recombinant Rabbit Monoclonal
Isotype	Rabbit IgG, kappa
Clone Name	PDL1/4280R
Purity	Protein A affinity chromatography
UniProt	Q9NZQ7
Localization	Cell surface, cytoplasmic
Applications	Immunohistochemistry (FFPE) : 1-2ug/ml for 30 minutes at RT
Limitations	This recombinant PD-L1 antibody is available for research use only.



IHC staining of FFPE human placenta with recombinant PD-L1 antibody (clone PDL1/4280R). HIER: boil tissue sections in pH 9 10mM Tris with 1mM EDTA for 20 min and allow to cool before testing.



IHC staining of FFPE human lung small cell carcinoma with recombinant PD-L1 antibody (clone PDL1/4280R). HIER: boil tissue sections in pH 9 10mM Tris with 1mM EDTA for 20 min and allow to cool before testing.



SDS-PAGE analysis of purified, BSA-free recombinant PD-L1 antibody (clone PDL1/4280R) as confirmation of integrity and purity.

## Description

PD-L1 is a checkpoint regulator in immune cells, it is expressed on immune or non-hematopoietic cells. Expression of the protein is seen during pregnancy where it has a role in suppressing the immune system. PD-L1 induces an inhibitory signal in activated T-cells and promotes T-cell apoptosis. It is overexpressed in a number of different cancers where it is believed to play a significant role in the cancer's ability to evade the immune system.

## Application Notes

Optimal dilution of the recombinant PD-L1 antibody should be determined by the researcher.

## Immunogen

A linear peptide specific to human PD-L1 was used as the immunogen for the recombinant PD-L1 antibody.

## Storage

Store the recombinant PD-L1 antibody at 2-8°C (with azide) or aliquot and store at -20°C or colder (without azide).