

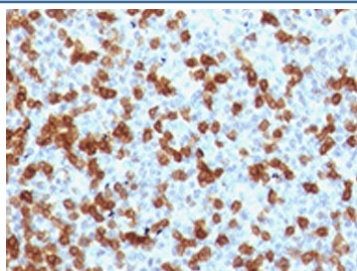
## Recombinant PD-1 Antibody / Rabbit Monoclonal [clone RMPD1-1] (V7204)

Catalog No.	Formulation	Size
V7204-100UG	0.2 mg/ml in 1X PBS with 0.1 mg/ml BSA (US sourced) and 0.05% sodium azide	100 ug
V7204-20UG	0.2 mg/ml in 1X PBS with 0.1 mg/ml BSA (US sourced) and 0.05% sodium azide	20 ug
V7204SAF-100UG	1 mg/ml in 1X PBS; BSA free, sodium azide free	100 ug
V7204IHC-7ML	Prediluted in 1X PBS with 0.1 mg/ml BSA (US sourced) and 0.05% sodium azide; *For IHC use only*	7 ml

Recombinant **RABBIT MONOCLONAL**

[Bulk quote request](#)

<b>Availability</b>	1-3 business days
<b>Species Reactivity</b>	Human
<b>Format</b>	Purified
<b>Clonality</b>	Recombinant Rabbit Monoclonal
<b>Isotype</b>	Rabbit IgG, k
<b>Clone Name</b>	RMPD1-1
<b>Purity</b>	Protein A affinity chromatography
<b>UniProt</b>	Q15116
<b>Localization</b>	Cell surface & cytoplasmic
<b>Applications</b>	Immunohistochemistry (FFPE) : 1-2ug/ml for 30 min at RT Prediluted IHC Only Format : incubate for 30 min at RT (1)
<b>Limitations</b>	This recombinant PD-1 antibody is available for research use only.



IHC testing of FFPE human tonsil with recombinant PD-1 antibody (clone RMPD1-1).  
HIER: steam sections in 10mM Tris with 1mM EDTA, pH 9, for 10-20 min.

## Description

Programmed cell death protein 1 is an inhibitory cell surface receptor involved in the regulation of T-cell function during immunity and tolerance. Upon ligand binding, inhibits T-cell effector functions in an antigen-specific manner. Possible cell death inducer, in association with other factors. [UniProt]

## Application Notes

Titration of the recombinant PD-1 antibody may be required for optimal performance.

1. The prediluted format is supplied in a dropper bottle and is optimized for use in IHC. After epitope retrieval step (if required), drip mAb solution onto the tissue section and incubate at RT for 30 min.

## Immunogen

A full length recombinant human protein was used as the immunogen for the recombinant PD-1 antibody.

## Storage

Store the recombinant PD-1 antibody at 2-8°C (with azide) or aliquot and store at -20°C or colder (without azide).