

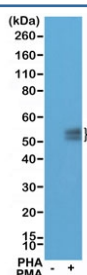
Recombinant PD-1 Antibody / N-Terminal [clone RM309] (R20330)

Catalog No.	Formulation	Size
R20330-0.1ML	Antibody in PBS with 50% glycerol, 1% BSA and 0.09% sodium azide	100 ul

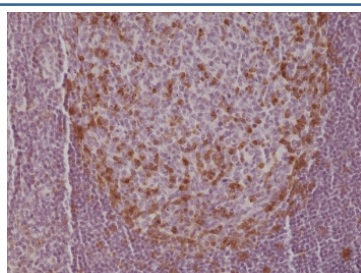
Recombinant **RABBIT MONOCLONAL**

[Bulk quote request](#)

Availability	1-3 business days
Species Reactivity	Human
Format	Purified
Clonality	Recombinant Rabbit Monoclonal
Isotype	Rabbit IgG
Clone Name	RM309
Purity	Protein A purified from animal origin-free supernatant
UniProt	Q15116
Localization	Cell surface, cytoplasm
Applications	Immunohistochemistry (FFPE) : 1:200-1:500 Western Blot : 1:100-1:200
Limitations	This recombinant PD-1 antibody is available for research use only.



Western blot testing of lysate from Jurkat cells, untreated (-) or treated (+) with PHA and PMA, with recombinant PD-1 antibody at 1:100 dilution. Predicted molecular weight: 32-55 kDa depending on glycosylation level.



IHC testing of formalin fixed and paraffin embedded human tonsil tissue with recombinant PD-1 antibody at 1:500 dilution. HIER: steam section in pH6 citrate buffer for 20 min and allow to cool prior to staining.

Description

This antibody reacts to human PD-1 (Programmed cell death protein 1; PDCD1; CD279).

Application Notes

The stated application concentrations are suggested starting points. Titration of the recombinant PD-1 antibody may be required due to differences in protocols and secondary/substrate sensitivity.

Immunogen

A peptide corresponding to the N-terminus of human PD-1 was used as the immunogen for the recombinant PD-1 antibody.

Storage

Store the recombinant PD-1 antibody at -20oC.