

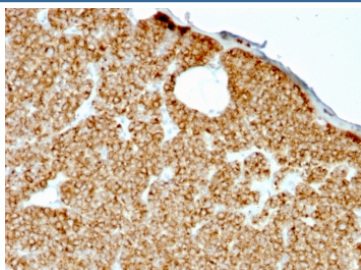
## Recombinant Parathyroid Hormone Antibody / N-Terminal [clone rPTH/911] (V3645)

Catalog No.	Formulation	Size
V3645-100UG	0.2 mg/ml in 1X PBS with 0.1 mg/ml BSA (US sourced) and 0.05% sodium azide	100 ug
V3645-20UG	0.2 mg/ml in 1X PBS with 0.1 mg/ml BSA (US sourced) and 0.05% sodium azide	20 ug
V3645SAF-100UG	1 mg/ml in 1X PBS; BSA free, sodium azide free	100 ug
V3645IHC-7ML	Prediluted in 1X PBS with 0.1 mg/ml BSA (US sourced) and 0.05% sodium azide; *For IHC use only*	7 ml

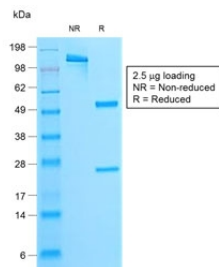
Recombinant **MOUSE MONOCLONAL**

[Bulk quote request](#)

<b>Availability</b>	1-3 business days
<b>Species Reactivity</b>	Human
<b>Format</b>	Purified
<b>Clonality</b>	Recombinant Mouse Monoclonal
<b>Isotype</b>	Mouse IgG2b, kappa
<b>Clone Name</b>	rPTH/911
<b>Purity</b>	Protein G affinity chromatography
<b>UniProt</b>	P01270
<b>Localization</b>	Cytoplasmic and secreted
<b>Applications</b>	Immunohistochemistry (FFPE; Not Suitable For Frozen Tissues) : 0.5-1ug/ml for 30 min at RT
<b>Limitations</b>	This recombinant Parathyroid Hormone antibody is available for research use only.



IHC testing of FFPE human parathyroid gland stained with recombinant Parathyroid Hormone antibody (clone rPTH/911). Required HIER: boil tissue sections in pH6, 10mM citrate buffer, for 10-20 min followed by cooling at RT for 20 min.



SDS-PAGE analysis of purified, BSA-free recombinant Parathyroid Hormone antibody (clone rPTH/911) as confirmation of integrity and purity.

## Description

PTH/Parathyroid hormone is a hormone produced by the parathyroid gland that regulates the concentration of calcium and phosphorus in extracellular fluid. This hormone elevates blood  $\text{Ca}^{2+}$  levels by dissolving the salts in bone and preventing their renal excretion. It is produced in the parathyroid gland as an 84 amino acid single chain polypeptide. It can also be secreted as N-terminal truncated fragments or C-terminal fragments after intracellular degradation, as in case of hypercalcemia. Defects in this gene are a cause of familial isolated hypoparathyroidism (FIH); also called autosomal dominant hypoparathyroidism or autosomal dominant hypocalcemia. FIH is characterized by hypocalcemia and hyperphosphatemia due to inadequate secretion of parathyroid hormone. Symptoms are seizures, tetany and cramps. FIH exist both as autosomal dominant and recessive forms of hypoparathyroidism.

## Application Notes

Optimal dilution of the recombinant Parathyroid Hormone antibody should be determined by the researcher.

1. The prediluted format is supplied in a dropper bottle and is optimized for use in IHC. After epitope retrieval step (if required), drip mAb solution onto the tissue section and incubate at RT for 30 min.

## Immunogen

A synthetic peptide from the N-terminal region of the human protein was used as the immunogen for the recombinant Parathyroid Hormone antibody.

## Storage

Store the recombinant Parathyroid Hormone antibody at 2-8°C (with azide) or aliquot and store at -20°C or colder (without azide).