

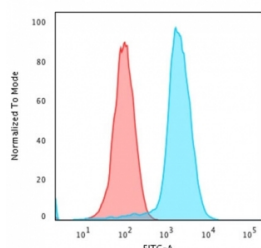
Recombinant Pan-HLA Antibody (DP/DQ/DR) [clone rHLA-Pan/3475] (V8305)

Catalog No.	Formulation	Size
V8305-100UG	0.2 mg/ml in 1X PBS with 0.1 mg/ml BSA (US sourced) and 0.05% sodium azide	100 ug
V8305-20UG	0.2 mg/ml in 1X PBS with 0.1 mg/ml BSA (US sourced) and 0.05% sodium azide	20 ug
V8305SAF-100UG	1 mg/ml in 1X PBS; BSA free, sodium azide free	100 ug

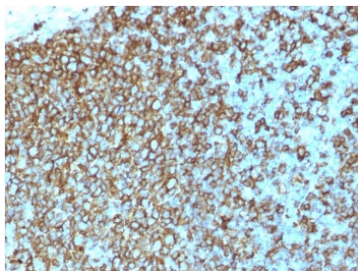
Recombinant MOUSE MONOCLONAL

[Bulk quote request](#)

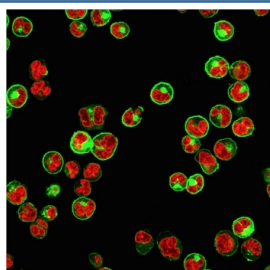
Availability	1-3 business days
Species Reactivity	Human
Format	Purified
Host	Mouse
Clonality	Recombinant Mouse Monoclonal
Isotype	Mouse IgG1, kappa
Clone Name	rHLA-Pan/3475
Purity	Protein G affinity chromatography
UniProt	P04440 (HLA-DP); P01908; P01909; P01920 (HLA-DQ); P01903 (HLA-DR)
Localization	Cell surface
Applications	Flow Cytometry : 1-2ug/10 ⁶ cells in 0.1ml Immunofluorescence : 1-2ug/ml Immunohistochemistry (FFPE) : 1-2ug/ml Western Blot : 1-2ug/ml
Limitations	This recombinant Pan-HLA antibody is available for research use only.



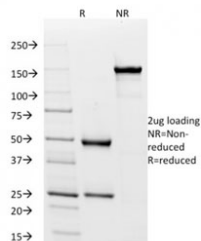
Flow cytometry testing of human Raji cells with recombinant Pan-HLA antibody (clone rHLA-Pan/3475); Red=isotype control, Blue= recombinant Pan-HLA antibody.



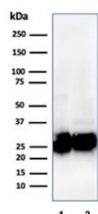
IHC testing of FFPE human tonsil tissue with recombinant Pan-HLA antibody (clone rHLA-Pan/3475). Required HIER: boil tissue sections in pH 9 10mM Tris with 1mM EDTA for 10-20 min and allow to cool prior to testing.



Immunofluorescence staining of human Raji cells with recombinant Pan-HLA antibody (green, clone rHLA-Pan/3475) and Reddot nuclear stain (red).



SDS-PAGE analysis of purified, BSA-free recombinant Pan-HLA antibody (clone rHLA-Pan/3475) as confirmation of integrity and purity.



Western blot testing of human 1) Ramos and 2) spleen tissue lysate with recombinant Pan-HLA antibody (clone rHLA-Pan/3475).

Description

Reacts with a common epitope of human major histocompatibility (MHC) class II antigens, HLA-DP, -DQ and -DR. Human MHC class II antigens are transmembrane glycoproteins composed of an alpha chain (36kDa) and a beta chain (27kDa). They are expressed primarily on antigen presenting cells such as B lymphocytes, monocytes, macrophages, and thymic epithelial cells and are also present on activated T lymphocytes. Human MHC class II genes are located in the HLA-D region that encodes at least six alpha and ten beta chain genes. Three loci, DR, DQ and DP, encode the major expressed products of the human class II region. The human MHC class II molecules bind intracellularly processed peptides and present them to T-helper cells. They, therefore, have a critical role in the initiation of the immune response.

Application Notes

Optimal dilution of the recombinant Pan-HLA antibody should be determined by the researcher.

Immunogen

The non-T, non-B human acute lymphoblastic leukemia REH6 cell line was used as the immunogen for the Pan-HLA antibody.

Storage

Store the recombinant Pan-HLA antibody at 2-8°C (with azide) or aliquot and store at -20°C or colder (without azide).