

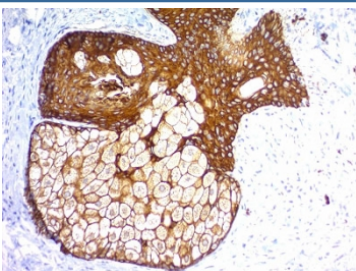
Pan Cytokeratin Antibody / Epithelial Cytoskeleton Structure Marker [clone KRTL/1577R + KRTH/1576R] (V7400)

Catalog No.	Formulation	Size
V7400-100UG	0.2 mg/ml in 1X PBS with 0.1 mg/ml BSA (US sourced) and 0.05% sodium azide	100 ug
V7400-20UG	0.2 mg/ml in 1X PBS with 0.1 mg/ml BSA (US sourced) and 0.05% sodium azide	20 ug
V7400SAF-100UG	1 mg/ml in 1X PBS; BSA free, sodium azide free	100 ug
V7400IHC-7ML	Prediluted in 1X PBS with 0.1 mg/ml BSA (US sourced) and 0.05% sodium azide; *For IHC use only*	7 ml

Recombinant **RABBIT MONOCLONAL**

[Bulk quote request](#)

Availability	1-3 business days
Species Reactivity	Human
Format	Purified
Host	Rabbit
Clonality	Recombinant Rabbit Monoclonal
Isotype	Rabbit IgG, kappa
Clone Name	KRTL/1577R + KRTH/1576R
Purity	Protein A affinity chromatography
Localization	Cytoplasmic
Applications	Immunohistochemistry (FFPE) : 0.25-0.5ug/ml for 30 min at RT Prediluted IHC Only Format : incubate for 30 min at RT (1)
Limitations	This Pan Cytokeratin Antibody / Epithelial Cytoskeleton Structure Marker is available for research use only.



Pan Cytokeratin Antibody human skin IHC. Immunohistochemistry analysis of cytoke­ratin expression in FFPE human skin using Pan Cytokeratin antibody clones KRTL/1577R + KRTH/1576R. Strong cytoplasmic HRP-DAB brown staining highlights epithelial cells within the epidermis, clearly outlining keratinocyte morphology and cytoskeletal organization, while underlying dermal tissue remains largely negative. The staining pattern supports visualization of epithelial structure and tissue architecture. HIER was performed using pH 6 citrate buffer for 10–20 minutes followed by cooling prior to antibody incubation.

Description

Cytokeratins are a major class of intermediate filament proteins that form an extensive cytoskeletal network within epithelial cells, where they maintain cellular integrity, support mechanical stability, and preserve tissue architecture. These proteins are divided into type I acidic and type II basic keratins, which heterodimerize to assemble filamentous structures that extend throughout the cytoplasm. This filament network is essential for maintaining epithelial cell shape, polarity, and resistance to mechanical stress, and its organization directly reflects epithelial structural integrity.

Pan Cytokeratin Antibody / Epithelial Cytoskeleton Structure Marker (clone KRTL/1577R + KRTH/1576R) is designed to provide comprehensive detection of cytokeratin proteins with particular strength in visualizing epithelial cytoskeletal architecture. This recombinant rabbit monoclonal antibody cocktail combines recognition of both type I and type II keratins, enabling broad epithelial coverage while preserving the characteristic filamentous staining pattern associated with intermediate filaments. Pan cytokeratin antibody, also referred to as cytokeratin cocktail antibody or CK pan antibody, is widely used to identify epithelial cells in tissue sections.

In immunohistochemistry, cytokeratin staining produced by this antibody appears as strong, continuous cytoplasmic labeling that reflects the underlying filament network within epithelial cells. This staining pattern provides detailed visualization of epithelial morphology, including cell boundaries, polarity, and structural organization within tissue compartments. The ability to clearly resolve these features makes this antibody particularly useful for analyzing epithelial architecture and assessing structural changes associated with disease.

The dual-clone composition of KRTL/1577R and KRTH/1576R provides complementary recognition of cytokeratin subclasses, ensuring consistent detection across a wide range of epithelial tissues. This broad and balanced reactivity supports reliable staining in both simple and stratified epithelia, as well as glandular and ductal structures. The recombinant rabbit format enhances affinity and signal clarity, contributing to sharp and reproducible staining patterns.

In tissue sections, cytokeratin staining delineates epithelial layers and highlights glandular formations, ducts, and epithelial-lined surfaces with high contrast against surrounding stromal tissue. This makes the antibody particularly valuable for evaluating tissue organization and identifying disruptions in epithelial structure, such as loss of polarity, architectural distortion, or abnormal cellular arrangement.

In tumor analysis, strong cytoskeletal staining enables clear visualization of carcinoma cell morphology and structural arrangement. The filamentous cytoplasmic pattern highlights tumor cell boundaries and supports interpretation of tumor architecture, including gland formation, solid growth patterns, and invasive fronts. This provides useful context for assessing epithelial-derived tumors and their structural characteristics.

Because this antibody is designed for broad cytokeratin recognition, it is not intended for isoform-specific analysis. Instead, it provides a comprehensive view of epithelial cytoskeletal organization that complements more specialized keratin antibodies used to define epithelial subtypes or differentiation states.

Pan Cytokeratin Antibody clone KRTL/1577R + KRTH/1576R therefore provides a robust tool for detailed analysis of epithelial cytoskeletal structure, enabling high-clarity visualization of cell morphology, tissue architecture, and structural organization across a wide range of biological samples.

This antibody is part of our [Pan Cytokeratin Antibody collection](#), which enables broad epithelial detection across normal and cancer tissues.

Application Notes

1. Optimal dilution of the Pan Cytokeratin Antibody / Epithelial Cytoskeleton Structure Marker should be determined by the researcher.

.2. The prediluted format is supplied in a dropper bottle and is optimized for use in IHC. After epitope retrieval step (if required), drip mAb solution onto the tissue section and incubate at RT for 30 min.

3. This antibody cocktail recognizes acidic (Type I or LMW) and basic (Type II or HMW) cytokeratins, which 67kDa (CK1); 64kDa (CK3); 59kDa (CK4); 58kDa (CK5); 56kDa (CK6); 52kDa (CK8); 56.5kDa (CK10); 50kDa (CK14); 50kDa (CK15); 48kDa (CK16); 40kDa (CK19).

Immunogen

Recombinant human KRT77 and KRT76 protein were used as the immunogen for the recombinant Pan Cytokeratin antibody.

Storage

Store the recombinant Pan Cytokeratin antibody at 2-8oC (with azide) or aliquot and store at -20oC or colder (without azide).

Alternate Names

Pan cytokeratin antibody IHC, cytokeratin cytoskeleton antibody, epithelial structure marker antibody, CK pan cytoplasmic staining antibody, cytokeratin filament antibody