

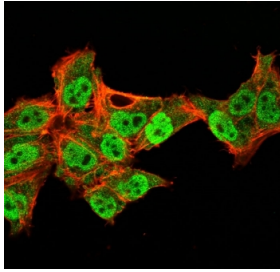
## p40 Antibody for IF / deltaNp63 Immunofluorescence Antibody [clone TP40/3980R] (V8628)

Catalog No.	Formulation	Size
V8628-100UG	0.2 mg/ml in 1X PBS with 0.1 mg/ml BSA (US sourced) and 0.05% sodium azide	100 ug
V8628-20UG	0.2 mg/ml in 1X PBS with 0.1 mg/ml BSA (US sourced) and 0.05% sodium azide	20 ug
V8628SAF-100UG	1 mg/ml in 1X PBS; BSA free, sodium azide free	100 ug

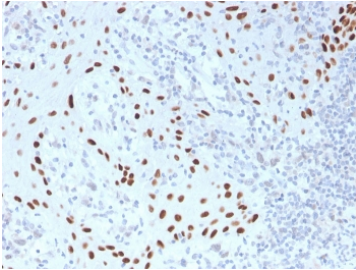
Recombinant **RABBIT MONOCLONAL**

[Bulk quote request](#)

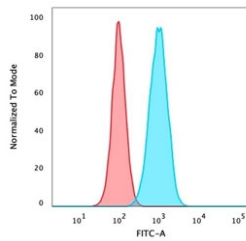
<b>Availability</b>	1-3 business days
<b>Species Reactivity</b>	Human
<b>Format</b>	Purified
<b>Host</b>	Rabbit
<b>Clonality</b>	Recombinant Rabbit Monoclonal
<b>Isotype</b>	Rabbit IgG
<b>Clone Name</b>	TP40/3980R
<b>Purity</b>	Protein A affinity chromatography
<b>UniProt</b>	Q9H3D4
<b>Localization</b>	Nuclear
<b>Applications</b>	Flow Cytometry : 1-2ug/million cells Immunofluorescence : 1-2ug/ml Immunohistochemistry (FFPE) : 1-2ug/ml for 30 minutes at RT
<b>Limitations</b>	This p40 antibody is available for research use only.



p40 Antibody for IF. Immunofluorescence analysis of PFA-fixed and permeabilized human HeLa cells using a p40 Antibody for IF (clone TP40/3980R) demonstrates strong green nuclear staining corresponding to Tumor protein p40 (deltaNp63), while Phalloidin (red) highlights actin cytoskeletal structures in the cytoplasm. The fluorescence signal is confined to nuclei, showing clear subcellular localization of deltaNp63 as a transcription factor, with minimal cytoplasmic background. The sharp nuclear definition and strong signal intensity are consistent with high-affinity binding of the recombinant rabbit monoclonal antibody, enabling precise visualization of p40-positive cells. The distinct separation between nuclear p40 signal and cytoskeletal staining supports accurate interpretation of epithelial cell identity and intracellular organization in immunofluorescence-based imaging.



IHC staining of FFPE human skin with recombinant p40 antibody (clone TP40/3980R).  
HIER: boil tissue sections in pH 9 10mM Tris with 1mM EDTA for 20 min and allow to cool before testing.



Flow cytometry testing of PFA-fixed human HeLa cells with recombinant p40 antibody (clone TP40/3980R); Red=isotype control, Blue= p40 antibody.

## Description

Tumor protein p40, representing the deltaNp63 isoform of TP63, is a nuclear transcription factor that regulates epithelial differentiation and maintains squamous and basal epithelial identity. p40 Antibody for IF is optimized for immunofluorescence applications where high-resolution imaging, nuclear localization, and co-localization analysis are central to interpretation. This format allows researchers to directly visualize deltaNp63 within individual cells and in relation to other cellular structures.

p40 antibody, also known as deltaNp63 antibody in the literature, is highly specific for the deltaNp63 isoform and provides a more focused signal than broader p63 antibodies. In immunofluorescence, this specificity is particularly important because it ensures that nuclear staining reflects lineage-relevant deltaNp63 expression rather than mixed isoform detection. p40 Antibody for IF enables clear identification of deltaNp63-positive nuclei within epithelial sheets, basal layers, and tumor cell populations.

The IF differentiator is especially strong because immunofluorescence preserves spatial and subcellular context while enabling multiplex detection. p40 Antibody for IF produces a confined nuclear fluorescence signal that can be directly compared with cytoplasmic, membrane, or proliferation markers in the same sample. This allows researchers to study how deltaNp63 expression relates to cell state, differentiation status, and interactions with other signaling pathways.

Clone TP40/3980R is a recombinant rabbit monoclonal antibody, providing high affinity and strong signal intensity. In fluorescence-based applications, this often results in bright, well-defined nuclear staining with low background. The recombinant format ensures consistent performance across experiments, which is essential for imaging workflows where signal quality directly affects interpretation and reproducibility.

In cell and tissue imaging, p40 Antibody for IF enables visualization of heterogeneity within epithelial populations, allowing researchers to distinguish strongly positive, weakly positive, and negative cells within the same field. This is particularly useful in studies of tumor biology, where differences in deltaNp63 expression may reflect distinct cellular states or differentiation stages.

The ability to combine p40 staining with multiple fluorescent channels further enhances its utility. Researchers can perform co-localization studies to evaluate relationships between deltaNp63 and other nuclear or cytoplasmic markers, providing deeper insight into epithelial organization and transcriptional regulation.

p40 Antibody for IF is particularly valuable for applications requiring precise nuclear localization, high-resolution imaging, and multiplex analysis. Its deltaNp63 specificity ensures accurate interpretation of lineage-associated expression, while the rabbit monoclonal format supports strong and consistent fluorescence signal.

Tumor protein p40 antibody clone TP40/3980R provides a high-performance solution for immunofluorescence detection of deltaNp63, enabling detailed analysis of nuclear localization, epithelial differentiation, and cellular heterogeneity.

## Application Notes

Optimal dilution of the recombinant p40 Antibody for IF / deltaNp63 Immunofluorescence Antibody should be determined by the researcher.

## Immunogen

A synthetic peptide from the N-terminal of human p40 protein was used as the immunogen for the p40 Antibody for IF / deltaNp63 Immunofluorescence Antibody.

## Storage

Store the recombinant p40 antibody at 2-8oC (with azide) or aliquot and store at -20oC or colder (without azide).

## Alternate Names

p40 immunofluorescence antibody, deltaNp63 IF antibody, p40 nuclear fluorescence antibody, deltaNp63 cell imaging antibody