

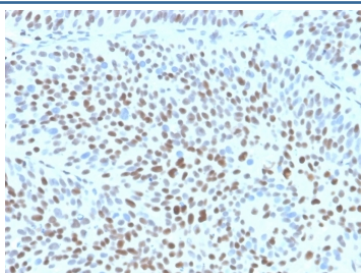
Recombinant p27Kip1 Antibody / p27 / CDKN1B [clone KIP1/1355R] (V9526)

Catalog No.	Formulation	Size
V9526-100UG	0.2 mg/ml in 1X PBS with 0.1 mg/ml BSA (US sourced), 0.05% sodium azide	100 ug
V9526-20UG	0.2 mg/ml in 1X PBS with 0.1 mg/ml BSA (US sourced), 0.05% sodium azide	20 ug
V9526SAF-100UG	1 mg/ml in 1X PBS; BSA free, sodium azide free	100 ug

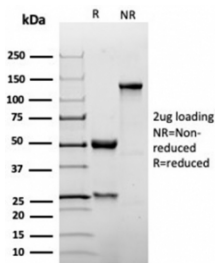
Recombinant **RABBIT MONOCLONAL**

[Bulk quote request](#)

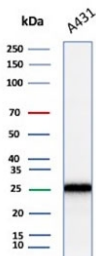
Availability	1-3 business days
Species Reactivity	Human, Mouse
Format	Purified
Host	Rabbit
Clonality	Recombinant Rabbit Monoclonal
Isotype	Rabbit IgG
Clone Name	KIP1/1355R
Purity	Protein A/G affinity
UniProt	P46527
Localization	Nuclear
Applications	Immunohistochemistry (FFPE) : 1-2ug/ml Western Blot : 2-4ug/ml
Limitations	This recombinant p27Kip1 antibody is available for research use only.



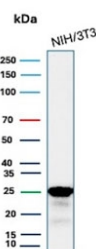
IHC staining of FFPE human bladder tissue with recombinant p27Kip1 antibody (clone KIP1/1355R) at 2ug/ml. HIER: boil tissue sections in pH 9 10mM Tris with 1mM EDTA for 20 min and allow to cool before testing. Strong nuclear staining observed.



SDS-PAGE analysis of purified, BSA-free recombinant p27Kip1 antibody (clone KIP1/1355R) as confirmation of integrity and purity.



Western blot testing of human A431 cell lysate with recombinant p27Kip1 antibody. Expected molecular weight ~27 kDa.



Western blot testing of mouse NIH 3T3 cell lysate with recombinant p27Kip1 antibody. Expected molecular weight ~27 kDa.

Description

This MAb recognizes a 27kDa protein, identified as the p27Kip1, a cell cycle regulatory mitotic inhibitor. It functions as a negative regulator of G1 progression and has been proposed to function as a possible mediator of TGF- β induced G1 arrest.

Application Notes

Optimal dilution of the recombinant p27Kip1 antibody should be determined by the researcher.

Immunogen

Recombinant full-length human CDKN1B protein was used as the immunogen for the recombinant p27Kip1 antibody.

Storage

Aliquot the recombinant p27Kip1 antibody and store frozen at -20°C or colder. Avoid repeated freeze-thaw cycles.