

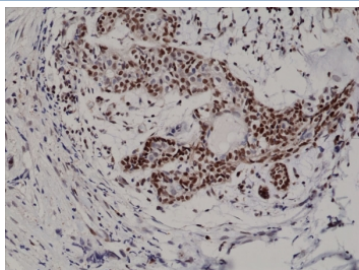
Recombinant p27 Antibody / C-Terminal [clone RM302] (R20324)

Catalog No.	Formulation	Size
R20324-0.1ML	Antibody in PBS with 50% glycerol, 1% BSA and 0.09% sodium azide	100 ul

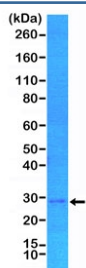
Recombinant **RABBIT MONOCLONAL**

[Bulk quote request](#)

Availability	1-3 business days
Species Reactivity	Human
Predicted Reactivity	Mouse
Format	Purified
Host	Rabbit
Clonality	Recombinant Rabbit Monoclonal
Isotype	Rabbit IgG
Clone Name	RM302
Purity	Protein A purified from animal origin-free supernatant
UniProt	P46527
Localization	Nuclear
Applications	Immunohistochemistry (FFPE) : 1:100-1:200 Western Blot : 1:500-1:1000
Limitations	This recombinant p27 antibody is available for research use only.



IHC testing of formalin fixed and paraffin embedded human breast cancer tissue with recombinant p27 antibody at 1:200 dilution. HIER: steam section in pH6 citrate buffer for 20 min and allow to cool prior to staining.



Western blot testing of human MCF7 cell lysate with recombinant p27 antibody at 1:1000. Expected molecular weight: 22~27 kDa.

Description

This antibody reacts to human p27Kip1 (Cyclin-dependent kinase inhibitor 1B). It may also react to mouse p27Kip1, as predicted by immunogen homology.

Application Notes

The stated application concentrations are suggested starting points. Titration of the recombinant p27 antibody may be required due to differences in protocols and secondary/substrate sensitivity.

Immunogen

A peptide corresponding to the C-terminus of human p27Kip1 was used as the immunogen for the recombinant p27 antibody.

Storage

Store the recombinant p27 antibody at -20°C.