

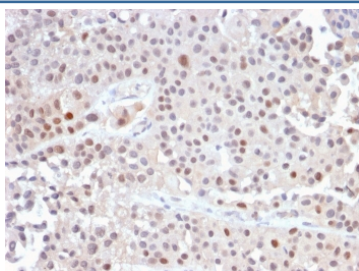
Recombinant p21 Antibody / CDKN1A [clone CIP1/2489R] (V7655)

Catalog No.	Formulation	Size
V7655-100UG	0.2 mg/ml in 1X PBS with 0.1 mg/ml BSA (US sourced) and 0.05% sodium azide	100 ug
V7655-20UG	0.2 mg/ml in 1X PBS with 0.1 mg/ml BSA (US sourced) and 0.05% sodium azide	20 ug
V7655SAF-100UG	1 mg/ml in 1X PBS; BSA free, sodium azide free	100 ug

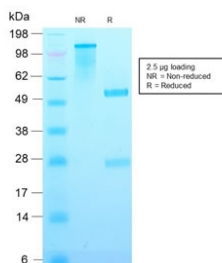
Recombinant **RABBIT MONOCLONAL**

[Bulk quote request](#)

Availability	1-3 business days
Species Reactivity	Human
Format	Purified
Clonality	Recombinant Rabbit Monoclonal
Isotype	Rabbit IgG
Clone Name	CIP1/2489R
Purity	Protein A affinity chromatography
UniProt	P38936
Localization	Nuclear
Applications	Immunohistochemistry (FFPE) : 1-2ug/ml
Limitations	This recombinant p21 antibody is available for research use only.



IHC staining of FFPE human urothelial carcinoma with recombinant p21 antibody (clone CIP1/2489R). HIER: boil tissue sections in pH 9 10mM Tris with 1mM EDTA for 10-20 min and allow to cool before testing.



SDS-PAGE analysis of purified, BSA-free recombinant p21 antibody (clone CIP1/2489R) as confirmation of integrity and purity.

Description

This MAb recognizes a 21kDa protein, identified as the p21WAF1 tumor suppressor protein. This MAb is highly specific to p21 and shows no cross-reaction with other closely related mitotic inhibitors. p21WAF1 is a specific inhibitor of cdk's and a tumor suppressor involved in the pathogenesis of a variety of malignancies. The expression of this gene acts as an inhibitor of the cell cycle during G1 phase and is tightly controlled by the tumor suppressor protein p53. Its expression is induced by the wild type, but not mutant, p53 suppressor protein. Normal cells generally display a rather intense nuclear p21 expression. Loss of p21 expression has been reported in many carcinomas (gastric carcinoma, non-small cell lung carcinoma, thyroid carcinoma).

Application Notes

Optimal dilution of the recombinant p21 antibody should be determined by the researcher.

Immunogen

A recombinant full-length human protein was used as the immunogen for the recombinant p21 antibody.

Storage

Store the recombinant p21 antibody at 2-8oC (with azide) or aliquot and store at -20oC or colder (without azide).