

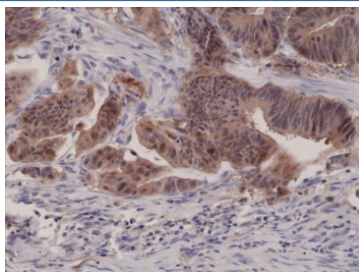
Recombinant p16INK4a Antibody [clone RM267] (R20284)

Catalog No.	Formulation	Size
R20284-0.1ML	Antibody in PBS with 50% glycerol, 1% BSA and 0.09% sodium azide	100 ul

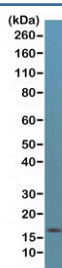
Recombinant **RABBIT MONOCLONAL**

[Bulk quote request](#)

Availability	1-3 business days
Species Reactivity	Human
Format	Purified
Clonality	Recombinant Rabbit Monoclonal
Isotype	Rabbit IgG
Clone Name	RM267
Purity	Protein A purified from animal origin-free supernatant
UniProt	P42771
Gene ID	1029
Applications	Immunohistochemistry (FFPE) : 1:500-1:1000 (1) Western Blot : 1:500-1:1000
Limitations	This recombinant p16INK4a antibody is available for research use only.



IHC testing of FFPE human colon cancer tissue with recombinant p16INK4a antibody at 1:1000.



Western blot testing of human HeLa cell lysate with recombinant p16INK4a antibody at 1:500. Predicted molecular weight ~16 kDa.

Description

This recombinant p16INK4a antibody reacts to human p16INK4a (Cyclin-dependent kinase inhibitor 2A).

Application Notes

The stated application concentrations are suggested starting points. Titration of the recombinant p16INK4a antibody may be required due to differences in protocols and secondary/substrate sensitivity.

1. A pH6 Citrate buffer or pH9 Tris/EDTA buffer HIER step is recommended for testing of FFPE tissue sections.

Immunogen

A peptide corresponding to the C-terminus of human p16INK4a (Cyclin-dependent kinase inhibitor 2A) was used as the immunogen for this recombinant p16INK4a antibody.

Storage

Store the recombinant p16INK4a antibody at -20oC (with glycerol) or aliquot and store at -20oC (without glycerol).