

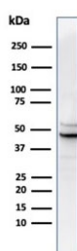
Recombinant Ornithine Decarboxylase Antibody / ODC1 [clone rODC1/487] (V9689)

Catalog No.	Formulation	Size
V9689-100UG	0.2 mg/ml in 1X PBS with 0.1 mg/ml BSA (US sourced), 0.05% sodium azide	100 ug
V9689-20UG	0.2 mg/ml in 1X PBS with 0.1 mg/ml BSA (US sourced), 0.05% sodium azide	20 ug
V9689SAF-100UG	1 mg/ml in 1X PBS; BSA free, sodium azide free	100 ug

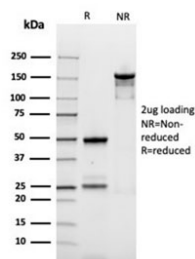
Recombinant MOUSE MONOCLONAL

[Bulk quote request](#)

Availability	1-3 business days
Species Reactivity	Human
Format	Purified
Host	Mouse
Clonality	Recombinant Mouse Monoclonal
Isotype	Mouse IgG1, kappa
Clone Name	rODC1/487
Purity	Protein A/G affinity
UniProt	P11926
Localization	Cytoplasmic
Applications	ELISA (order BSA-free Format For Coating) : Western Blot : 1-2ug/ml
Limitations	This recombinant Ornithine Decarboxylase antibody is available for research use only.



Western blot analysis of human PC3 cell lysate using recombinant Ornithine Decarboxylase antibody (clone rODC1/487). Predicted molecular weight ~51 kDa.



SDS-PAGE analysis of purified, BSA-free recombinant Ornithine Decarboxylase antibody (clone rODC1/487) as confirmation of integrity and purity.

Description

Recognizes a 51-53kDa protein, identified as the Ornithine Decarboxylase (ODC-1). ODC is the initial and rate-limiting enzyme in the biosynthetic pathway of polyamines and is involved in the conversion of ornithine to putrescine. The biological activity of ODC-1 is rapidly induced in response to virtually all agents known to promote cell proliferation including hormones, drugs, growth factors, mitogens, and tumor promoters. Reportedly, ODC mRNA levels are elevated in lung carcinomas as well as in colon adenomas and carcinomas. ODC activity in colorectal carcinomas is greater than those in adenomas and normal mucosa.

Application Notes

Optimal dilution of the recombinant Ornithine Decarboxylase antibody should be determined by the researcher.

Immunogen

Recombinant full-length human protein was used as the immunogen for the recombinant Ornithine Decarboxylase antibody.

Storage

Aliquot the recombinant Ornithine Decarboxylase antibody and store frozen at -20oC or colder. Avoid repeated freeze-thaw cycles.