

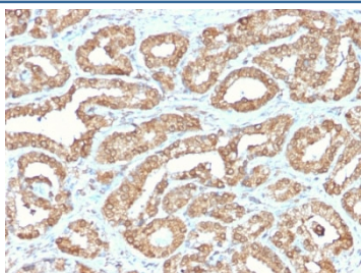
Recombinant ODC1 Antibody [clone ODC1/2878R] (V7449)

Catalog No.	Formulation	Size
V7449-100UG	0.2 mg/ml in 1X PBS with 0.1 mg/ml BSA (US sourced) and 0.05% sodium azide	100 ug
V7449-20UG	0.2 mg/ml in 1X PBS with 0.1 mg/ml BSA (US sourced) and 0.05% sodium azide	20 ug
V7449SAF-100UG	1 mg/ml in 1X PBS; BSA free, sodium azide free	100 ug
V7449IHC-7ML	Prediluted in 1X PBS with 0.1 mg/ml BSA (US sourced) and 0.05% sodium azide; *For IHC use only*	7 ml

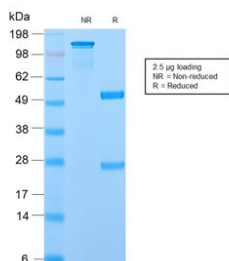
Recombinant **RABBIT MONOCLONAL**

[Bulk quote request](#)

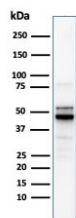
Availability	1-3 business days
Species Reactivity	Human
Format	Purified
Clonality	Recombinant Rabbit Monoclonal
Isotype	Rabbit IgG, kappa
Clone Name	ODC1/2878R
Purity	Protein A affinity chromatography
UniProt	P11926
Localization	Cytoplasmic
Applications	Immunohistochemistry (FFPE) : 0.25-0.5ug/ml for 30 min at RT Western Blot : 1-2ug/ml
Limitations	This recombinant ODC1 antibody is available for research use only.



IHC staining of FFPE human prostate tissue with recombinant ODC1 antibody. HIER: boil tissue sections in pH6, 10mM citrate buffer, for 10-20 min and allow to cool before testing.



SDS-PAGE analysis of purified, BSA-free recombinant ODC1 antibody as confirmation of integrity and purity.



Western blot testing of human PC-3 cell lysate with recombinant ODC1 antibody. Predicted molecular weight ~51 kDa.

Description

Recognizes a 53kDa protein, identified as the Ornithine Decarboxylase (ODC-1). ODC is the initial and rate-limiting enzyme in the biosynthetic pathway of polyamines and is involved in the conversion of ornithine to putrescine. The biological activity of ODC-1 is rapidly induced in response to virtually all agents known to promote cell proliferation including hormones, drugs, growth factors, mitogens, and tumor promoters. Reportedly, ODC mRNA levels are elevated in lung carcinomas as well as in colon adenomas and carcinomas. ODC activity in colorectal carcinomas is greater than those in adenomas and normal mucosa.

Application Notes

Optimal dilution of the recombinant ODC1 antibody should be determined by the researcher.

1. The prediluted format is supplied in a dropper bottle and is optimized for use in IHC. After epitope retrieval step (if required), drip mAb solution onto the tissue section and incubate at RT for 30 min.

Immunogen

Recombinant human protein was used as the immunogen for the recombinant ODC1 antibody.

Storage

Store the recombinant ODC1 antibody at 2-8oC (with azide) or aliquot and store at -20oC or colder (without azide).