

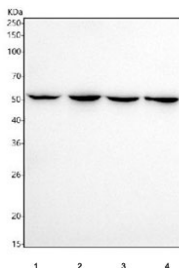
Recombinant NUP50 Antibody / Nuclear pore complex protein Nup50 [clone 29N16] (RQ8819)

Catalog No.	Formulation	Size
RQ8819	Antibody in PBS with 0.02% sodium azide, 50% glycerol and 0.4-0.5mg/ml BSA	100 ul

Recombinant **RABBIT MONOCLONAL**

[Bulk quote request](#)

Availability	1-3 days
Species Reactivity	Human
Format	Purified
Host	Rabbit
Clonality	Recombinant Rabbit Monoclonal
Isotype	Rabbit IgG
Clone Name	29N16
Purity	Affinity chromatography
UniProt	Q9UKX7
Applications	Western Blot : 1:500-1:2000
Limitations	This recombinant NUP50 antibody is available for research use only.



Western blot testing of human 1) HeLa, 2) A431, 3) U-2 OS and 4) 293T cell lysate with recombinant NUP50 antibody. Expected molecular weight: 50-60 kDa.

Description

Nucleoporins are the main components of the nuclear pore complex in eukaryotic cells. NUP50 is a member of the FG-repeat containing nucleoporins that functions as a soluble cofactor in importin- α : β -mediated nuclear protein import.

Application Notes

Optimal dilution of the recombinant NUP50 antibody should be determined by the researcher.

Immunogen

A synthetic peptide specific to human Nuclear pore complex protein Nup50 was used as the immunogen for the recombinant NUP50 antibody.

Storage

Store the recombinant NUP50 antibody at -20oC.