

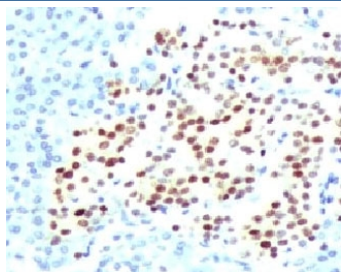
Recombinant NKX2.2 Antibody / Rabbit Monoclonal [clone RMNK2-1] (V7226)

Catalog No.	Formulation	Size
V7226-100UG	0.2 mg/ml in 1X PBS with 0.1 mg/ml BSA (US sourced) and 0.05% sodium azide	100 ug
V7226-20UG	0.2 mg/ml in 1X PBS with 0.1 mg/ml BSA (US sourced) and 0.05% sodium azide	20 ug
V7226SAF-100UG	1 mg/ml in 1X PBS; BSA free, sodium azide free	100 ug
V7226IHC-7ML	Prediluted in 1X PBS with 0.1 mg/ml BSA (US sourced) and 0.05% sodium azide; *For IHC use only*	7 ml

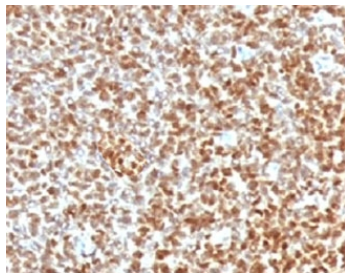
Recombinant RABBIT MONOCLONAL

[Bulk quote request](#)

Species Reactivity	Human
Format	Purified
Host	Rabbit
Clonality	Recombinant Rabbit Monoclonal
Isotype	Rabbit IgG, kappa
Clone Name	RMNK2-1
Purity	Protein A affinity chromatography
Buffer	1X PBS, pH 7.4
Gene ID	4821
Localization	Nuclear
Applications	Immunohistochemistry (FFPE) : 1-2ug/ml for 30 min at RT Prediluted IHC Only Format : incubate for 30 min at RT (1)
Limitations	This recombinant NKX2.2 antibody is available for research use only.



IHC testing of FFPE human pancreas with recombinant NKX2.2 antibody (clone RMNK2-1). HIER: steam sections in pH 9 10mM Tris with 1mM EDTA for 10-20 min.



IHC testing of FFPE Ewings sarcoma with recombinant NKX2.2 antibody (clone RMNK2-1). HIER: steam sections in pH 9 10mM Tris with 1mM EDTA for 10-20 min.

Description

NKX2.2 acts as a transcriptional activator. Required for the maintenance of NEUROD1 expression in the hormone-producing endocrine cells of the pancreas. May be involved in specifying diencephalic neuromeric boundaries, and in controlling the expression of genes that play a role in axonal guidance. Associates with chromatin at the NEUROD1 promoter region. Binds to a subset of consensus elements within the NEUROD1 promoter (By similarity). [UniProt]

Application Notes

Titration of the recombinant NKX2.2 antibody may be required for optimal performance.

1. The prediluted format is supplied in a dropper bottle and is optimized for use in IHC. After epitope retrieval step (if required), drip mAb solution onto the tissue section and incubate at RT for 30 min.

Immunogen

A human partial recombinant protein was used as the immunogen for this recombinant NKX2.2 antibody.

Storage

Store the recombinant NKX2.2 antibody at 2-8°C (with azide) or aliquot and store at -20°C or colder (without azide).