

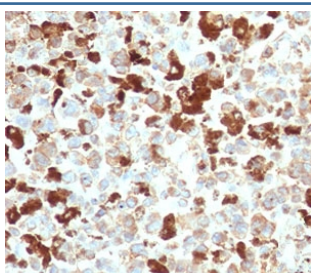
Recombinant NGFR Antibody / p75NTR [clone CDLA271-2R] (V7441)

Catalog No.	Formulation	Size
V7441-100UG	0.2 mg/ml in 1X PBS with 0.1 mg/ml BSA (US sourced) and 0.05% sodium azide	100 ug
V7441-20UG	0.2 mg/ml in 1X PBS with 0.1 mg/ml BSA (US sourced) and 0.05% sodium azide	20 ug
V7441SAF-100UG	1 mg/ml in 1X PBS; BSA free, sodium azide free	100 ug
V7441IHC-7ML	Prediluted in 1X PBS with 0.1 mg/ml BSA (US sourced) and 0.05% sodium azide; *For IHC use only*	7 ml

Recombinant **RABBIT MONOCLONAL**

[Bulk quote request](#)

Availability	1-3 business days
Species Reactivity	Human
Format	Purified
Host	Rabbit
Clonality	Recombinant Rabbit Monoclonal
Isotype	Rabbit IgG, kappa
Clone Name	CDLA271-2R
Purity	Protein A affinity chromatography
UniProt	P08138
Localization	Cell surface and cytoplasmic
Applications	Immunohistochemistry (FFPE) : 1-2ug/ml for 30 min at RT Prediluted IHC Only Format : incubate for 30 min at RT (1)
Limitations	This recombinant NGFR antibody is available for research use only.



IHC testing of FFPE human melanoma with recombinant NGFR antibody (clone CDLA271-2R). Required HIER: boil tissue sections in pH6, 10mM citrate buffer, for 10-20 min and allow to cool prior to testing.

Description

CD271/NGFR plays a role in the regulation of the translocation of GLUT4 to the cell surface in adipocytes and skeletal muscle cells in response to insulin, probably by regulating RAB31 activity, and thereby contributes to the regulation of insulin-dependent glucose uptake (By similarity). Low affinity receptor which can bind to NGF, BDNF, NT-3, and NT-4. Can mediate cell survival as well as cell death of neural cells. Necessary for the circadian oscillation of the clock genes ARNTL/BMAL1, PER1, PER2 and NR1D1 in the suprachiasmatic nucleus (SCN) of the brain and in liver and of the genes involved in glucose and lipid metabolism in the liver. [UniProt]

Application Notes

The stated application concentrations are suggested starting points. Titration of the recombinant NGFR antibody may be required due to differences in protocols and secondary/substrate sensitivity.

1. The prediluted format is supplied in a dropper bottle and is optimized for use in IHC. After epitope retrieval step (if required), drip mAb solution onto the tissue section and incubate at RT for 30 min.

Immunogen

A portion of amino acids 281-421 from the human protein was used as the immunogen for the recombinant NGFR antibody.

Storage

Store the recombinant NGFR antibody at 2-8°C (with azide) or aliquot and store at -20°C or colder (without azide).