

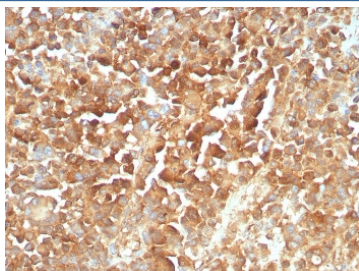
## Recombinant NGFR Antibody / p75NTR / CD271 [clone rNGFR/8824] (V4523)

Catalog No.	Formulation	Size
V4523-100UG	0.2 mg/ml in 1X PBS with 0.1 mg/ml BSA (US sourced), 0.05% sodium azide	100 ug
V4523-20UG	0.2 mg/ml in 1X PBS with 0.1 mg/ml BSA (US sourced), 0.05% sodium azide	20 ug
V4523SAF-100UG	1 mg/ml in 1X PBS; BSA free, sodium azide free	100 ug

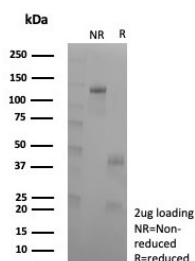
### Recombinant MOUSE MONOCLONAL

[Bulk quote request](#)

Availability	1-3 business days
Species Reactivity	Human
Format	Purified
Clonality	Recombinant Mouse Monoclonal
Isotype	Mouse IgG1, kappa
Clone Name	rNGFR/8824
Purity	Protein A/G affinity
UniProt	P08138
Localization	Cell surface, Cytoplasm
Applications	Immunohistochemistry (FFPE) : 1-2ug/ml for 30 min at RT
Limitations	This recombinant NGFR antibody is available for research use only.



IHC staining of FFPE human melanoma tissue with recombinant NGFR antibody (clone rNGFR/8824). HIER: boil tissue sections in pH 9 10mM Tris with 1mM EDTA for 20 min and allow to cool before testing.



SDS-PAGE analysis of purified, BSA-free recombinant NGFR antibody (clone rNGFR/8824) as confirmation of integrity and purity.

## Description

It recognizes a glycoprotein of 75kDa, identified as low affinity Nerve Growth Factor (NGF) Receptor (p75NGFR) or Neurotrophin Receptor (p75NTR). NGFR is expressed in various neural crest cells and their tumors such as melanocytes, melanomas, neuroblastomas, pheochromocytomas and neurofibromas. Reportedly, anti-NGFR is a reliable marker for desmoplastic and neurotropic melanomas. NGFR is expressed in mature non-neural cells such as perivascular cells, dental pulp cells, lymphoidal follicular dendritic cells, basal epithelium of oral mucosa and hair follicles, prostate basal cells, and myoepithelial cells. Anti-NGFR stains the myoepithelial cells of breast ducts and intra-lobular fibroblasts of breast ducts.

## Application Notes

Optimal dilution of the recombinant NGFR antibody should be determined by the researcher.

## Immunogen

Recombinant full-length human protein was used as the immunogen for the recombinant NGFR antibody.

## Storage

Aliquot the recombinant NGFR antibody and store frozen at -20oC or colder. Avoid repeated freeze-thaw cycles.