

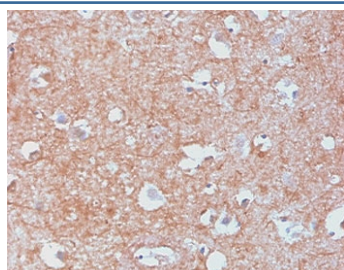
Recombinant NF-L Antibody / Neurofilament Light [clone MSI27-2R] (V7469)

Catalog No.	Formulation	Size
V7469-100UG	0.2 mg/ml in 1X PBS with 0.1 mg/ml BSA (US sourced) and 0.05% sodium azide	100 ug
V7469-20UG	0.2 mg/ml in 1X PBS with 0.1 mg/ml BSA (US sourced) and 0.05% sodium azide	20 ug
V7469SAF-100UG	1 mg/ml in 1X PBS; BSA free, sodium azide free	100 ug
V7469IHC-7ML	Prediluted in 1X PBS with 0.1 mg/ml BSA (US sourced) and 0.05% sodium azide; *For IHC use only*	7 ml

Recombinant **RABBIT MONOCLONAL**

[Bulk quote request](#)

Availability	1-3 business days
Species Reactivity	Human
Format	Purified
Host	Rabbit
Clonality	Recombinant Rabbit Monoclonal
Isotype	Rabbit IgG, kappa
Clone Name	MSI27-2R
Purity	Protein A affinity chromatography
UniProt	P07196
Localization	Cytoplasmic, membranous
Applications	Immunohistochemistry (FFPE) : 0.5-1ug/ml for 30 min at RT Prediluted IHC Only Format : incubate for 30 min at RT (1)
Limitations	This recombinant NF-L antibody is available for research use only.



IHC staining of human cerebellum with recombinant NF-L antibody (clone MSI27-2R).
HIER: boil tissue sections in pH 9 10mM Tris with 1mM EDTA for 10-20 min and allow to cool before testing.

Description

Neurofilaments are type IV intermediate filament heteropolymers composed of light, medium, and heavy chains. Neurofilaments comprise the axoskeleton and they functionally maintain the neuronal caliber. They may also play a role in intracellular transport to axons and dendrites. [RefSeq]

Application Notes

The stated application concentrations are suggested starting points. Titration of the recombinant NF-L antibody may be required due to differences in protocols and secondary/substrate sensitivity.

1. The prediluted format is supplied in a dropper bottle and is optimized for use in IHC. After epitope retrieval step (if required), drip mAb solution onto the tissue section and incubate at RT for 30 min.

Immunogen

Recombinant human protein was used as the immunogen for the recombinant NF-L antibody.

Storage

Store the recombinant NF-L antibody at 2-8°C (with azide) or aliquot and store at -20°C or colder (without azide).