

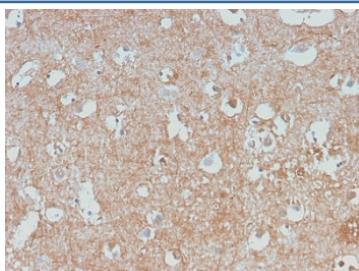
Recombinant Neurofilament Antibody [clone NEFL/2983R] (V7313)

Catalog No.	Formulation	Size
V7313-100UG	0.2 mg/ml in 1X PBS with 0.1 mg/ml BSA (US sourced) and 0.05% sodium azide	100 ug
V7313-20UG	0.2 mg/ml in 1X PBS with 0.1 mg/ml BSA (US sourced) and 0.05% sodium azide	20 ug
V7313SAF-100UG	1 mg/ml in 1X PBS; BSA free, sodium azide free	100 ug
V7313IHC-7ML	Prediluted in 1X PBS with 0.1 mg/ml BSA (US sourced) and 0.05% sodium azide; *For IHC use only*	7 ml

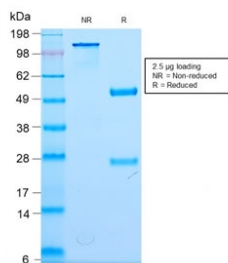
Recombinant **RABBIT MONOCLONAL**

[Bulk quote request](#)

Availability	1-3 business days
Species Reactivity	Human
Format	Purified
Clonality	Recombinant Rabbit Monoclonal
Isotype	Rabbit IgG, kappa
Clone Name	NEFL/2983R
Purity	Protein A affinity chromatography
UniProt	P07196
Localization	Cytoplasmic, membranous
Applications	Immunohistochemistry (FFPE) : 0.25-0.5ug/ml for 30 min at RT
Limitations	This recombinant Neurofilament antibody is available for research use only.



IHC staining of human cerebellum with recombinant Neurofilament antibody (clone NEFL/2983R). HIER: boil tissue sections in pH 9 10mM Tris with 1mM EDTA for 10-20 min and allow to cool before testing.



SDS-PAGE analysis of purified, BSA-free recombinant Neurofilament antibody (clone NEFL/2983R) as confirmation of integrity and purity.

Description

This MAb reacts with a 68kDa protein, identified as light sub-unit of neurofilaments (NF-L). Neurofilaments make up the main structural elements of axons and dendrites and are found in neurons, peripheral nerves, and sympathetic ganglion cells. Neurofilaments consist of three major subunits with molecular weights of 68kDa (NF-L), 160kDa (NF-M) and 200kDa (NF-H). Anti-neurofilament stains a number of neural, neuroendocrine, and endocrine tumors. Neuromas, ganglioneuromas, gangliogliomas, ganglioneuroblastomas, and neuroblastomas stain positively for anti-neurofilament. Neurofilaments are also present in paragangliomas as well as adrenal and extra-adrenal pheochromocytomas. Carcinoids, neuroendocrine carcinomas of the skin, and oat cell carcinomas of the lung also express neurofilament.

Application Notes

Optimal dilution of the recombinant Neurofilament antibody should be determined by the researcher.

1. The prediluted format is supplied in a dropper bottle and is optimized for use in IHC. After epitope retrieval step (if required), drip mAb solution onto the tissue section and incubate at RT for 30 min.

Immunogen

Recombinant human protein was used as the immunogen for the recombinant Neurofilament antibody.

Storage

Store the recombinant Neurofilament antibody at 2-8°C (with azide) or aliquot and store at -20°C or colder (without azide).