

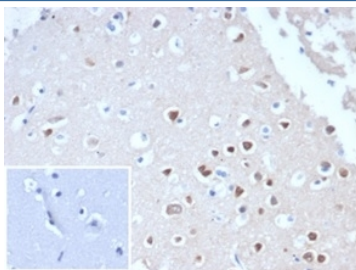
Recombinant NeuN Antibody / Fox3 [clone NeuN/288R] (V9368)

Catalog No.	Formulation	Size
V9368-100UG	0.2 mg/ml in 1X PBS with 0.1 mg/ml BSA (US sourced), 0.05% sodium azide	100 ug
V9368-20UG	0.2 mg/ml in 1X PBS with 0.1 mg/ml BSA (US sourced), 0.05% sodium azide	20 ug
V9368SAF-100UG	1 mg/ml in 1X PBS; BSA free, sodium azide free	100 ug

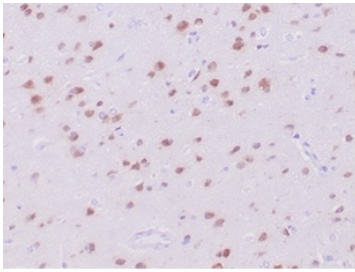
Recombinant **RABBIT MONOCLONAL**

[Bulk quote request](#)

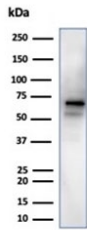
Availability	1-3 business days
Species Reactivity	Human
Format	Purified
Clonality	Recombinant Rabbit Monoclonal
Isotype	Rabbit IgG, kappa
Clone Name	NeuN/288R
Purity	Protein A/G affinity
UniProt	A6NFN3
Localization	Nucleus, Cytoplasm
Applications	Immunohistochemistry (FFPE) : 1-2ug/ml Western Blot:1-2ug/ml :
Limitations	This recombinant NeuN antibody is available for research use only.



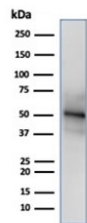
IHC staining of FFPE human cerebellum tissue with recombinant NeuN antibody (clone NeuN/288R). Negative control inset: PBS used instead of primary antibody to control for secondary Ab binding. HIER: boil tissue sections in pH 9 10mM Tris with 1mM EDTA for 20 min and allow to cool before testing.



IHC staining of FFPE human cerebrum tissue with recombinant NeuN antibody (clone NeuN/288R). HIER: boil tissue sections in pH 9 10mM Tris with 1mM EDTA for 20 min and allow to cool before testing.



Western blot testing of human brain tissue lysate using recombinant NeuN antibody (clone NeuN/288R).



Western blot testing of human HeLa cell lysate using recombinant NeuN antibody (clone NeuN/288R).

Description

RNA binding protein fox-1 homolog 3, also called RBFOX3, Neuronal Nuclei Antigen and NeuN, is present in most CNS and PNS neuronal cell types of all vertebrates tested. NeuN protein distributions are apparently restricted to neuronal nuclei and some proximal neuronal processes in both fetal and adult brain although, some neurons fail to be recognized by NeuN at all ages: INL retinal cells, Cajal-Retzius cells, Purkinje cells, inferior olivary and dentate nucleus neurons, and sympathetic ganglion cells are examples. Immunohistochemically detectable NeuN protein first appears at developmental timepoints that correspond with the withdrawal of the neuron from the cell cycle and/or with the initiation of terminal differentiation of the neuro. Immunoreactivity appears around E9.5 in the mouse neural tube and is extensive throughout the developing nervous system by E12.5. Strong nuclear staining suggests a nuclear regulatory protein function; however, no evidence currently exists as to whether the NeuN protein antigen has a function in the distal cytoplasm or whether it is merely synthesized there before being transported back into the nucleus. No difference between protein isolated from purified nuclei and whole brain extract on immunoblots has been found.

Application Notes

Optimal dilution of the recombinant NeuN antibody should be determined by the researcher.

Immunogen

Recombinant full-length human RNA binding protein fox-1 homolog 3 protein was used as the immunogen for the recombinant NeuN antibody.

Storage

Aliquot the recombinant NeuN antibody and store frozen at -20oC or colder. Avoid repeated freeze-thaw cycles.

