

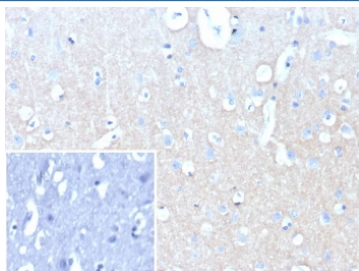
Recombinant NCAM-L1 Antibody / CD171 / L1CAM [clone L1CAM/9146R] (V5534)

Catalog No.	Formulation	Size
V5534-100UG	0.2 mg/ml in 1X PBS with 0.1 mg/ml BSA (US sourced), 0.05% sodium azide	100 ug
V5534-20UG	0.2 mg/ml in 1X PBS with 0.1 mg/ml BSA (US sourced), 0.05% sodium azide	20 ug
V5534SAF-100UG	1 mg/ml in 1X PBS; BSA free, sodium azide free	100 ug

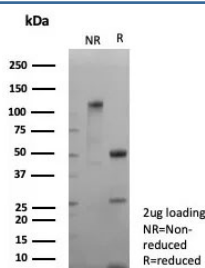
Recombinant **RABBIT MONOCLONAL**

[Bulk quote request](#)

Availability	1-3 business days
Species Reactivity	Human
Format	Purified
Clonality	Recombinant Rabbit Monoclonal
Isotype	Rabbit IgG, kappa
Clone Name	L1CAM/9146R
Purity	Protein A/G affinity
UniProt	P32004
Localization	Cytoplasm, Cell membrane
Applications	Immunohistochemistry (FFPE) : 1-2ug/ml
Limitations	This recombinant NCAM-L1 antibody is available for research use only.



IHC staining of FFPE human brain tissue with recombinant NCAM-L1 antibody (clone L1CAM/9146R). Inset: PBS used in place of primary Ab (secondary Ab negative control).
 HIER: boil tissue sections in pH 9 10mM Tris with 1mM EDTA for 20 min and allow to cool before testing.



SDS-PAGE analysis of purified, BSA-free recombinant NCAM-L1 antibody (clone L1CAM/9146R) as confirmation of integrity and purity.

Description

L1 (L1 cell adhesion molecule) also known as CAML1, CD171, and HSAS is an adhesion molecule which plays an important role in the nervous system development, including neuronal migration and differentiation. Mutations in the gene cause three X-linked neurological syndromes known by the acronym CRASH (corpus callosum hypoplasia, retardation, aphasia, spastic paraplegia and hydrocephalus). This mouse monoclonal antibody recognizes the sequence immediately NH2-terminal to the tyrosine-based motif and binds L1 only when Y1176 is dephosphorylated. Phosphorylation of either T1172 or Y1176 strongly inhibits binding of 74-5H7 to the L1 cytoplasmic domain.

Application Notes

Optimal dilution of the recombinant NCAM-L1 antibody should be determined by the researcher.

Immunogen

Recombinant full-length human L1CAM protein was used as the immunogen for the recombinant NCAM-L1 antibody.

Storage

Aliquot the recombinant NCAM-L1 antibody and store frozen at -20oC or colder. Avoid repeated freeze-thaw cycles.