

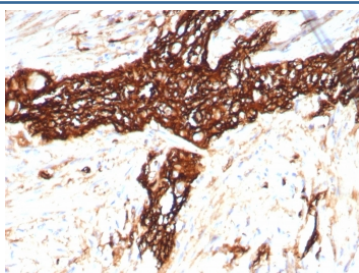
Recombinant NCAM Antibody / CD56 [clone rNCAM1/8758] (V4203)

Catalog No.	Formulation	Size
V4203-100UG	0.2 mg/ml in 1X PBS with 0.1 mg/ml BSA (US sourced), 0.05% sodium azide	100 ug
V4203-20UG	0.2 mg/ml in 1X PBS with 0.1 mg/ml BSA (US sourced), 0.05% sodium azide	20 ug
V4203SAF-100UG	1 mg/ml in 1X PBS; BSA free, sodium azide free	100 ug

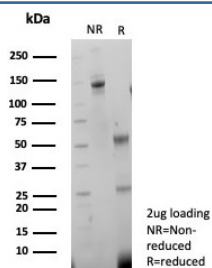
Recombinant **MOUSE MONOCLONAL**

[Bulk quote request](#)

Availability	1-3 business days
Species Reactivity	Human
Format	Purified
Host	Mouse
Clonality	Recombinant Mouse Monoclonal
Isotype	Mouse IgG2b, kappa
Clone Name	rNCAM1/8758
Purity	Protein A/G affinity
UniProt	P13591, P13592
Localization	Cell surface
Applications	Immunohistochemistry (FFPE) : 1-2ug/ml for 30 minutes at RT
Limitations	This recombinant NCAM antibody is available for research use only.



IHC staining of FFPE human colon tissue with recombinant NCAM antibody (clone rNCAM1/8758). HIER: boil tissue sections in pH 9 10mM Tris with 1mM EDTA for 20 min and allow to cool before testing.



SDS-PAGE analysis of purified, BSA-free recombinant NCAM antibody (clone rNCAM1/8758) as confirmation of integrity and purity.

Description

This mAb reacts with an extracellular domain (close to transmembrane) of CD56/NCAM. Three isoforms of neural cell adhesion molecule (NCAM) are produced by differential splicing of the RNA transcript from a single gene. The 135kDa isoform is the basic molecule, which is glycosylated or sialylated to produce the mature species. Anti-CD56 recognizes two proteins of the neural cell adhesion molecule, the basic molecule expressed on most neuroectodermally derived tissues and neoplasms (e.g. retinoblastoma, medulloblastomas, astrocytomas, neuroblastomas, and small cell carcinomas). It is also expressed on some mesodermally derived tumors (rhabdomyosarcoma). Anti-CD56 plays an important role in the diagnosis of nodal and nasal NK/T-cell lymphomas.

Application Notes

Optimal dilution of the recombinant NCAM antibody should be determined by the researcher.

Immunogen

A recombinant partial protein (within amino acids 684-894) from the human protein was used as the immunogen for the recombinant NCAM antibody.

Storage

Aliquot the recombinant NCAM antibody and store frozen at -20oC or colder. Avoid repeated freeze-thaw cycles.