

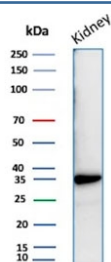
Recombinant Napsin A Antibody [clone rNAPSA/6926] (V9153)

Catalog No.	Formulation	Size
V9153-100UG	0.2 mg/ml in 1X PBS with 0.1 mg/ml BSA (US sourced), 0.05% sodium azide	100 ug
V9153-20UG	0.2 mg/ml in 1X PBS with 0.1 mg/ml BSA (US sourced), 0.05% sodium azide	20 ug
V9153SAF-100UG	1 mg/ml in 1X PBS; BSA free, sodium azide free	100 ug

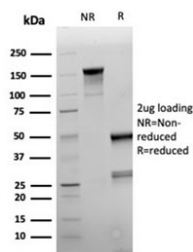
Recombinant **MOUSE MONOCLONAL**

[Bulk quote request](#)

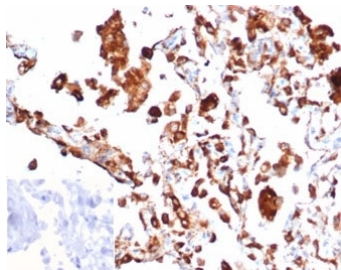
Availability	1-3 business days
Species Reactivity	Human
Format	Purified
Host	Mouse
Clonality	Recombinant Mouse Monoclonal
Isotype	Mouse IgG1, kappa
Clone Name	rNAPSA/6926
Purity	Protein A/G affinity
UniProt	O96009
Localization	Cytoplasm
Applications	Immunohistochemistry (FFPE) : 1-2ug/ml Western Blot : 2-4ug/ml
Limitations	This recombinant Napsin A antibody is available for research use only.



Western blot testing of human kidney tissue lysate with recombinant Napsin A antibody.
Expected molecular weight: 38-45 kDa.



SDS-PAGE analysis of purified, BSA-free recombinant Napsin A antibody (clone rNAPSA/6926) as confirmation of integrity and purity.



IHC staining of FFPE human lung adenocarcinoma tissue with recombinant Napsin A antibody (clone rNAPSA/6926). Negative control inset: PBS instead of primary antibody to control for secondary binding. HIER: boil tissue sections in pH 9 10mM Tris with 1mM EDTA for 20 min and allow to cool before testing.

Description

Napsin is a pepsin-like aspartic proteinase connected with maturation of surfactant protein B.

Application Notes

Optimal dilution of the recombinant Napsin A antibody should be determined by the researcher.

Immunogen

A portion of amino acids 1-100 was used as the immunogen for the recombinant Napsin A antibody.

Storage

Aliquot the recombinant Napsin A antibody and store frozen at -20°C or colder. Avoid repeated freeze-thaw cycles.