

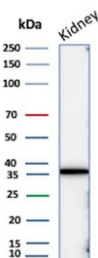
## Recombinant Napsin A Antibody [clone NAPSA/7043R] (V9131)

Catalog No.	Formulation	Size
V9131-100UG	0.2 mg/ml in 1X PBS with 0.1 mg/ml BSA (US sourced), 0.05% sodium azide	100 ug
V9131-20UG	0.2 mg/ml in 1X PBS with 0.1 mg/ml BSA (US sourced), 0.05% sodium azide	20 ug
V9131SAF-100UG	1 mg/ml in 1X PBS; BSA free, sodium azide free	100 ug

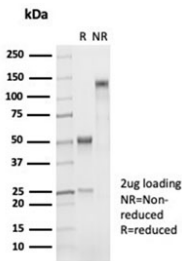
Recombinant **RABBIT MONOCLONAL**

[Bulk quote request](#)

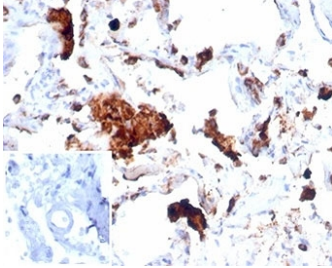
<b>Availability</b>	1-3 business days
<b>Species Reactivity</b>	Human
<b>Format</b>	Purified
<b>Host</b>	Rabbit
<b>Clonality</b>	Recombinant Rabbit Monoclonal
<b>Isotype</b>	Rabbit IgG, kappa
<b>Clone Name</b>	NAPSA/7043R
<b>Purity</b>	Protein A affinity
<b>UniProt</b>	O96009
<b>Localization</b>	Cytoplasm
<b>Applications</b>	Immunohistochemistry (FFPE) : 1-2ug/ml Western Blot : 2-4ug/ml
<b>Limitations</b>	This recombinant Napsin A antibody is available for research use only.



Western blot testing of human kidney tissue lysate with recombinant Napsin A antibody.  
Expected molecular weight: 38-45 kDa.



SDS-PAGE analysis of purified, BSA-free recombinant Napsin A antibody (NAPSA/7043R) as confirmation of integrity and purity.



IHC staining of FFPE human lung tissue with recombinant Napsin A antibody (clone NAPSA/7043R). Negative control inset: PBS instead of primary antibody to control for secondary binding. HIER: boil tissue sections in pH 9 10mM Tris with 1mM EDTA for 20 min and allow to cool before testing.

## Description

Napsin is a pepsin-like aspartic proteinase connected with maturation of surfactant protein B. There are two closely related napsins, napsin A and napsin B. Napsin A is expressed as a single chain protein. Immunohistochemical studies revealed high expression levels of napsin A in human lung and kidney but low expression in spleen. Napsin A is expressed in type II pneumocytes and in adenocarcinomas of lung. The high specificity expression of napsin A in adenocarcinomas of lung is useful to distinguish primary lung adenocarcinomas from adenocarcinomas of other organs.

## Application Notes

Optimal dilution of the recombinant Napsin A antibody should be determined by the researcher.

## Immunogen

A portion of amino acids 1-100 was used as the immunogen for the recombinant Napsin A antibody.

## Storage

Aliquot the recombinant Napsin A antibody and store frozen at -20°C or colder. Avoid repeated freeze-thaw cycles.