

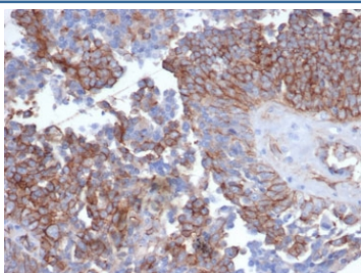
## Recombinant N-Cadherin Antibody / Cadherin-2 / CDH2 / CD325 [clone CDH2/6857R] (V8888)

| Catalog No.    | Formulation   | Size   |
|----------------|---|--------|
| V8888-100UG    | 0.2 mg/ml in 1X PBS with 0.1 mg/ml BSA (US sourced), 0.05% sodium azide | 100 ug |
| V8888-20UG     | 0.2 mg/ml in 1X PBS with 0.1 mg/ml BSA (US sourced), 0.05% sodium azide | 20 ug  |
| V8888SAF-100UG | 1 mg/ml in 1X PBS; BSA free, sodium azide free                          | 100 ug |

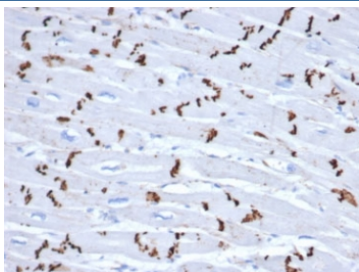
Recombinant **RABBIT MONOCLONAL**

[Bulk quote request](#)

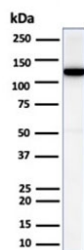
|                           |  |
|---------------------------|--|
| <b>Availability</b>       | 1-3 business days  |
| <b>Species Reactivity</b> | Human  |
| <b>Format</b>             | Purified   |
| <b>Clonality</b>          | Recombinant Rabbit Monoclonal  |
| <b>Isotype</b>            | Rabbit IgG   |
| <b>Clone Name</b>         | CDH2/6857R   |
| <b>Purity</b>             | Protein A/G affinity   |
| <b>UniProt</b>            | P19022   |
| <b>Localization</b>       | Cell surface   |
| <b>Applications</b>       | Western Blot : 1-2ug/ml<br>Immunohistochemistry (FFPE) : 1-2ug/ml        |
| <b>Limitations</b>        | This recombinant N-Cadherin antibody is available for research use only. |



IHC staining of FFPE human ovarian carcinoma tissue with recombinant N-Cadherin antibody (clone CDH2/6857R). HIER: boil tissue sections in pH 9 10mM Tris with 1mM EDTA for 20 min and allow to cool before testing.



IHC staining of intercalated discs in FFPE human heart tissue with recombinant N-Cadherin antibody (clone CDH2/6857R). HIER: boil tissue sections in pH 9 10mM Tris with 1mM EDTA for 20 min and allow to cool before testing.



Western blot analysis of human heart tissue lysate using recombinant N-Cadherin antibody (clone CDH2/6857R). Predicted molecular weight ~100 kDa (unmodified), 125-140 kDa (modified).

## Description

N-Cadherin/CDH2/Cadherin-2 acts as a regulator of neural stem cells quiescence by mediating anchorage of neural stem cells to ependymocytes in the adult subependymal zone: upon cleavage by MMP24, CDH2-mediated anchorage is affected, leading to modulate neural stem cell quiescence.

## Application Notes

Optimal dilution of the recombinant N-Cadherin antibody should be determined by the researcher.

## Immunogen

Recombinant full-length human CDH2 protein was used as the immunogen for the recombinant N-Cadherin antibody.

## Storage

Aliquot the recombinant N-Cadherin antibody and store frozen at -20°C or colder. Avoid repeated freeze-thaw cycles.