

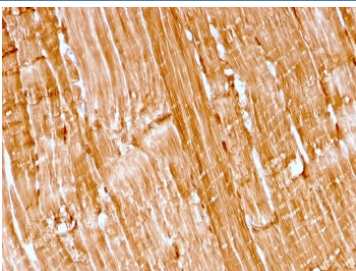
Recombinant Myoglobin Antibody [clone rMB/2105] (V7940)

Catalog No.	Formulation	Size
V7940-100UG	0.2 mg/ml in 1X PBS with 0.1 mg/ml BSA (US sourced) and 0.05% sodium azide	100 ug
V7940-20UG	0.2 mg/ml in 1X PBS with 0.1 mg/ml BSA (US sourced) and 0.05% sodium azide	20 ug
V7940SAF-100UG	1 mg/ml in 1X PBS; BSA free, sodium azide free	100 ug

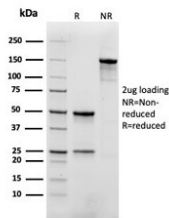
Recombinant **MOUSE MONOCLONAL**

[Bulk quote request](#)

Availability	1-3 business days
Species Reactivity	Human, Mouse, Rat
Format	Purified
Host	Mouse
Clonality	Recombinant Mouse Monoclonal
Isotype	Mouse IgG1, kappa
Clone Name	rMB/2105
Purity	Protein G affinity chromatography
UniProt	P02144
Localization	Cytoplasmic
Applications	Immunohistochemistry (FFPE) : 1-2ug/ml
Limitations	This recombinant Myoglobin antibody is available for research use only.



IHC staining of FFPE human skeletal muscle with recombinant Myoglobin antibody (rMB/2105). HIER: boil tissue sections in pH 9 10mM Tris with 1mM EDTA for 10-20 min and allow to cool before testing.



SDS-PAGE analysis of purified, BSA-free recombinant Myoglobin antibody (clone rMB/2105) as confirmation of integrity and purity.

Description

Myoglobin is a cytosolic oxygen-binding protein responsible for the storage and diffusion of oxygen within myocytes. Expression of myoglobin is highest in skeletal and cardiac muscle. Myoglobin is well accepted as an O₂-storage protein in muscle, capable of releasing O₂ during periods of hypoxia or anoxia. In combination with other striated muscle markers such as vimentin and myogenin, myoglobin is helpful in the identification of rhabdomyosarcoma and tumors with skeletal muscle differentiation. Reportedly, myoglobin is expressed on epithelial cancer cells due to changed metabolic and environmental conditions.

Application Notes

Optimal dilution of the recombinant Myoglobin antibody should be determined by the researcher.

Immunogen

Recombinant human full-length protein was used as the immunogen for this recombinant Myoglobin antibody.

Storage

Store the recombinant Myoglobin antibody at 2-8°C (with azide) or aliquot and store at -20°C or colder (without azide).