

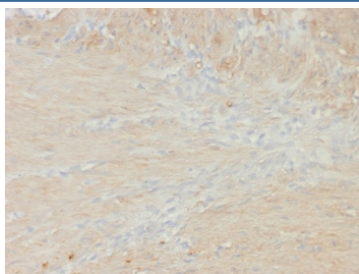
## Recombinant MYH11 Antibody / SMMHC [clone rMYH11/8066] (V4421)

Catalog No.	Formulation	Size
V4421-100UG	0.2 mg/ml in 1X PBS with 0.1 mg/ml BSA (US sourced), 0.05% sodium azide	100 ug
V4421-20UG	0.2 mg/ml in 1X PBS with 0.1 mg/ml BSA (US sourced), 0.05% sodium azide	20 ug
V4421SAF-100UG	1 mg/ml in 1X PBS; BSA free, sodium azide free	100 ug

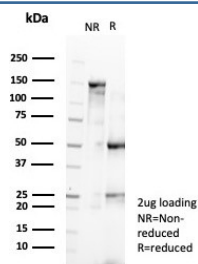
Recombinant **MOUSE MONOCLONAL**

[Bulk quote request](#)

<b>Availability</b>	1-3 business days
<b>Species Reactivity</b>	Human
<b>Format</b>	Purified
<b>Host</b>	Mouse
<b>Clonality</b>	Recombinant Mouse Monoclonal
<b>Isotype</b>	Mouse IgG1, kappa
<b>Clone Name</b>	rMYH11/8066
<b>Purity</b>	Protein A/G affinity
<b>UniProt</b>	P35749
<b>Localization</b>	Cytoplasm
<b>Applications</b>	Immunohistochemistry (FFPE) : 1-2ug/ml for 30 minutes at RT
<b>Limitations</b>	This recombinant MYH11 antibody is available for research use only.



IHC staining of FFPE colon smooth muscle tissue with recombinant MYH11 antibody (clone rMYH11/8066). HIER: boil tissue sections in pH 9 10mM Tris with 1mM EDTA for 20 min and allow to cool before testing.



SDS-PAGE analysis of purified, BSA-free recombinant MYH11 antibody (clone rMYH11/8066) as confirmation of integrity and purity.

## Description

Smooth muscle myosin heavy chain (SM-MHC) is a cytoplasmic structural protein, which is a major component of the contractile apparatus in smooth muscle cells. Expression of smooth muscle myosin is developmentally regulated, appearing early in smooth muscle development, and is specific for smooth muscle development. Two isoforms of smooth muscle myosin heavy chain have been identified, designated MHC-1 and MHC-2. The antibody may be useful for the study of breast tumors as the presence of an intact layer of myoepithelial cells is an important feature, which may distinguish benign breast lesions and carcinoma in situ from invasive tumors.

## Application Notes

Optimal dilution of the recombinant MYH11 antibody should be determined by the researcher.

## Immunogen

Recombinant full-length human protein was used as the immunogen for the recombinant MYH11 antibody.

## Storage

Aliquot the recombinant MYH11 antibody and store frozen at -20oC or colder. Avoid repeated freeze-thaw cycles.