

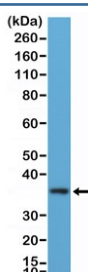
## Recombinant MyD88 Antibody / N-Terminal [clone RM306] (R20327)

Catalog No.	Formulation	Size
R20327-0.1ML	Antibody in PBS with 50% glycerol, 1% BSA and 0.09% sodium azide	100 ul

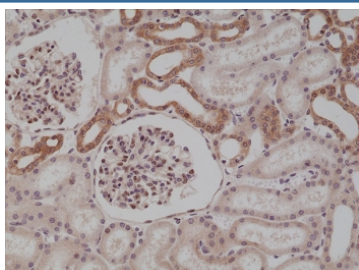
Recombinant **RABBIT MONOCLONAL**

[Bulk quote request](#)

Availability	1-3 business days
Species Reactivity	Human
Format	Purified
Host	Rabbit
Clonality	Recombinant Rabbit Monoclonal
Isotype	Rabbit IgG
Clone Name	RM306
Purity	Protein A purified from animal origin-free supernatant
UniProt	Q99836
Localization	Cytoplasmic
Applications	Immunohistochemistry (FFPE) : 1:100-1:250 Western Blot : 1:100-1:200
Limitations	This recombinant MyD88 antibody is available for research use only.



Western blot testing of human K562 cell lysate with recombinant MyD88 antibody at 1:100 dilution. Predicted molecular weight ~33 kDa.



IHC testing of formalin fixed and paraffin embedded human kidney tissue with recombinant MyD88 antibody at 1:250 dilution. HIER: steam section in pH6 citrate buffer for 20 min and allow to cool prior to staining.

## Description

This antibody reacts to the human myeloid differentiation primary response protein MyD88.

## Application Notes

The stated application concentrations are suggested starting points. Titration of the recombinant MyD88 antibody may be required due to differences in protocols and secondary/substrate sensitivity.

## Immunogen

A peptide corresponding to the N-terminus of human MyD88 was used as the immunogen for the recombinant MyD88 antibody.

## Storage

Store the recombinant MyD88 antibody at -20oC.