

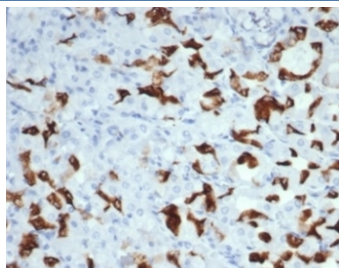
Recombinant Mucin 6 Antibody / MUC6 / Gastric Mucin [clone MUC6/7069R] (V8924)

Catalog No.	Formulation	Size
V8924-100UG	0.2 mg/ml in 1X PBS with 0.1 mg/ml BSA (US sourced), 0.05% sodium azide	100 ug
V8924-20UG	0.2 mg/ml in 1X PBS with 0.1 mg/ml BSA (US sourced), 0.05% sodium azide	20 ug
V8924SAF-100UG	1 mg/ml in 1X PBS; BSA free, sodium azide free	100 ug

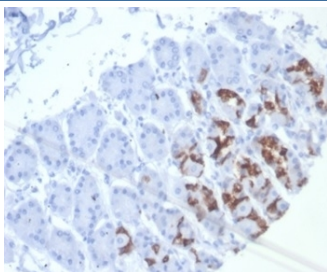
Recombinant **RABBIT MONOCLONAL**

[Bulk quote request](#)

Availability	1-3 business days
Species Reactivity	Human
Format	Purified
Host	Rabbit
Clonality	Recombinant Rabbit Monoclonal
Isotype	Rabbit IgG, kappa
Clone Name	MUC6/7069R
Purity	Protein A/G affinity
UniProt	Q6W4X9
Localization	Cytoplasm, Secreted
Applications	Immunohistochemistry (FFPE) : 1-2ug/ml
Limitations	This recombinant Mucin 6 antibody is available for research use only.



IHC staining of FFPE human salivary gland with recombinant Mucin 6 antibody (clone MUC6/7069R). HIER: boil tissue sections in pH 9 10mM Tris with 1mM EDTA for 20 min and allow to cool before testing.



IHC staining of FFPE human stomach tissue with recombinant Mucin 6 antibody (clone MUC6/7069R). HIER: boil tissue sections in pH 9 10mM Tris with 1mM EDTA for 20 min and allow to cool before testing.

Description

Mucin 6 is a secretory mucin, located in the deeper mucosal folds of human gall bladder, and its expression is altered with increasing degrees of inflammation.

Application Notes

Optimal dilution of the recombinant Mucin 6 antibody should be determined by the researcher.

Immunogen

Recombinant human recombinant Mucin 6 protein was used as the immunogen for the MUC6 antibody.

Storage

Aliquot the recombinant Mucin 6 antibody and store frozen at -20oC or colder. Avoid repeated freeze-thaw cycles.