

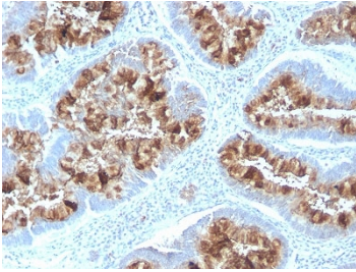
## Recombinant Mucin-1 Antibody / Rabbit Monoclonal [clone MUC1/2818R] (V7311)

Catalog No.	Formulation	Size
V7311-100UG	0.2 mg/ml in 1X PBS with 0.1 mg/ml BSA (US sourced) and 0.05% sodium azide	100 ug
V7311-20UG	0.2 mg/ml in 1X PBS with 0.1 mg/ml BSA (US sourced) and 0.05% sodium azide	20 ug
V7311SAF-100UG	1 mg/ml in 1X PBS; BSA free, sodium azide free	100 ug
V7311IHC-7ML	Prediluted in 1X PBS with 0.1 mg/ml BSA (US sourced) and 0.05% sodium azide; *For IHC use only*	7 ml

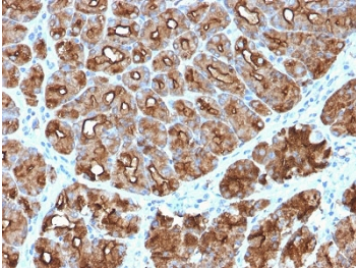
Recombinant **RABBIT MONOCLONAL**

[Bulk quote request](#)

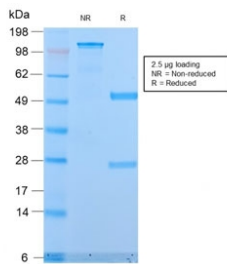
<b>Species Reactivity</b>	Human
<b>Format</b>	Purified
<b>Host</b>	Rabbit
<b>Clonality</b>	Recombinant Rabbit Monoclonal
<b>Isotype</b>	Rabbit IgG, kappa
<b>Clone Name</b>	MUC1/2818R
<b>Purity</b>	Protein A affinity chromatography
<b>UniProt</b>	P15941
<b>Gene ID</b>	4582
<b>Localization</b>	Cytoplasmic and cell surface
<b>Applications</b>	ELISA : 2-5ug/ml (order BSA/sodium azide-free format) Immunohistochemistry (FFPE) : 0.25-0.5ug/ml for 30 min at RT Western Blot : 1-2ug/ml
<b>Limitations</b>	This recombinant Mucin-1 antibody is available for research use only.



IHC testing of FFPE human colon with recombinant Mucin-1 antibody (clone MUC1/2818R). Required HIER: boil tissue sections in pH 9 10mM Tris with 1mM EDTA for 10-20 min followed by cooling at RT for 20 min.



IHC testing of FFPE human stomach carcinoma with recombinant Mucin-1 antibody (clone MUC1/2818R). Required HIER: boil tissue sections in pH 9 10mM Tris with 1mM EDTA for 10-20 min followed by cooling at RT for 20 min.



SDS-PAGE analysis of purified, BSA-free recombinant Mucin-1 antibody (clone MUC1/2818R) as confirmation of integrity and purity.



Western blot testing of human MCF7 cell lysate with recombinant Mucin-1 antibody (clone MUC1/2818R). This glycoprotein is commonly visualized between 120~500 kDa.

## Description

MUC1 is a large cell surface mucin glycoprotein expressed by most glandular and ductal epithelial cells and some hematopoietic cell lineages. It is expressed on most secretory epithelium, including mammary gland and some hematopoietic cells. It is expressed abundantly in lactating mammary glands and over expressed abundantly in >90% breast carcinomas and metastases. Transgenic MUC1 has been shown to associate with all four c-erbB receptors and localize with c-erbB1 (EGFR) in lactating glands. The MUC1 gene contains seven exons and produces several different alternatively spliced variants. The major expressed form of MUC1 uses all seven exons and is a type 1 transmembrane protein with a large extracellular tandem repeat domain. The tandem repeat domain is highly O glycosylated and alterations in glycosylation have been shown in epithelial cancer cells. Antibody to MUC1 is useful as a pan-epithelial marker for detecting early metastatic loci of carcinoma in bone marrow or liver.

## Application Notes

Titration of the recombinant Mucin-1 may be required due to differences in protocols and secondary/substrate sensitivity.

1. The prediluted format is supplied in a dropper bottle and is optimized for use in IHC. After epitope retrieval step (if required), drip mAb solution onto the tissue section and incubate at RT for 30 min.

## **Immunogen**

Human milk fat globule membranes were used as the immunogen for this recombinant Mucin-1 antibody.

## **Storage**

Store the recombinant Mucin-1 antibody at 2-8oC (with azide) or aliquot and store at -20oC or colder (without azide).