

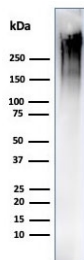
Recombinant Mucin-1 Antibody / MUC1 [clone MUC1/4416R] (V9266)

| Catalog No. | Formulation | Size |
|----------------|---|--------|
| V9266-100UG | 0.2 mg/ml in 1X PBS with 0.1 mg/ml BSA (US sourced), 0.05% sodium azide | 100 ug |
| V9266-20UG | 0.2 mg/ml in 1X PBS with 0.1 mg/ml BSA (US sourced), 0.05% sodium azide | 20 ug |
| V9266SAF-100UG | 1 mg/ml in 1X PBS; BSA free, sodium azide free | 100 ug |

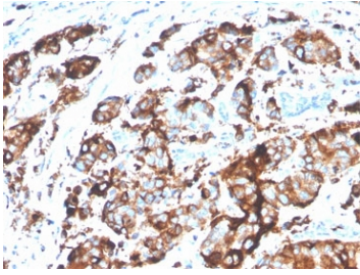
Recombinant **RABBIT MONOCLONAL**

[Bulk quote request](#)

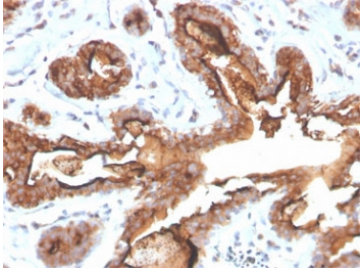
| | |
|---------------------------|---|
| Availability | 1-3 business days |
| Species Reactivity | Human |
| Format | Purified |
| Host | Rabbit |
| Clonality | Recombinant Rabbit Monoclonal |
| Isotype | Rabbit IgG |
| Clone Name | MUC1/4416R |
| Purity | Protein A/G affinity |
| UniProt | P15941 |
| Localization | Cytoplasmic, Cell Surface |
| Applications | Western Blot : 1-2ug/ml Immunohistochemistry (FFPE) : 1-2ug/ml |
| Limitations | This recombinant Mucin-1 antibody is available for research use only. |



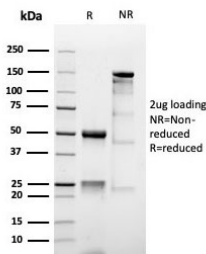
Western blot testing of human MCF-7 cell lysate using recombinant Mucin-1 antibody (clone MUC1/4416R). This glycoprotein is commonly visualized between 120~500 kDa.



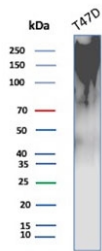
IHC staining of FFPE human breast carcinoma tissue with recombinant Mucin-1 antibody (clone MUC1/4416R). HIER: boil tissue sections in pH 9 10mM Tris with 1mM EDTA for 20 min and allow to cool before testing.



IHC staining of FFPE human breast carcinoma tissue with recombinant Mucin-1 antibody (clone MUC1/4416R). HIER: boil tissue sections in pH 9 10mM Tris with 1mM EDTA for 20 min and allow to cool before testing.



SDS-PAGE analysis of purified, BSA-free recombinant Mucin-1 antibody (clone MUC1/4416R) as confirmation of integrity and purity.



Western blot testing of human T-47D cell lysate with recombinant Mucin-1 antibody (clone MUC1/4416R). This glycoprotein is commonly visualized between 120~500 kDa.

Description

Mucin-1 may provide a protective layer on epithelial cells against bacterial and enzyme attack. In immunohistochemical assays, it superbly stains routine formalin/paraffin carcinomas. Anti-Mucin-1 antibody is a useful marker for staining many carcinomas. It stains normal and neoplastic cells from various tissues, including mammary epithelium, sweat glands and colorectal carcinoma. Hepatocellular carcinoma, adrenal carcinoma and embryonal carcinomas are consistently Mucin-1 negative, so keratin positivity with negative Mucin-1 favors one of these tumors. Mucin-1 is frequently positive in meningioma, which can be useful when distinguishing it from other intracranial neoplasms such as schwannomas. Antibody to Mucin-1 is useful as a pan-epithelial marker for detecting early metastatic loci of carcinoma in bone marrow or liver.

Application Notes

Optimal dilution of the recombinant Mucin-1 antibody should be determined by the researcher.

Immunogen

Recombinant full-length human MUC1 protein was used as the immunogen for the recombinant Mucin-1 antibody.

Storage

Aliquot the recombinant Mucin-1 antibody and store frozen at -20oC or colder. Avoid repeated freeze-thaw cycles.