

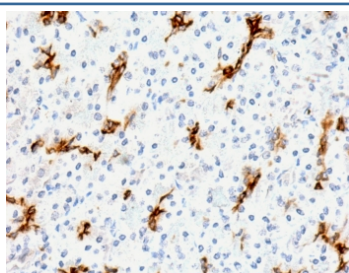
Recombinant MUC6 Antibody / Gastric Mucin / Rabbit Monoclonal [clone MUCN6-2R] (V3682)

Catalog No.	Formulation	Size
V3682-100UG	0.2 mg/ml in 1X PBS with 0.1 mg/ml BSA (US sourced) and 0.05% sodium azide	100 ug
V3682-20UG	0.2 mg/ml in 1X PBS with 0.1 mg/ml BSA (US sourced) and 0.05% sodium azide	20 ug
V3682SAF-100UG	1 mg/ml in 1X PBS; BSA free, sodium azide free	100 ug
V3682IHC-7ML	Prediluted in 1X PBS with 0.1 mg/ml BSA (US sourced) and 0.05% sodium azide; *For IHC use only*	7 ml

Recombinant **RABBIT MONOCLONAL**

[Bulk quote request](#)

Availability	1-3 business days
Species Reactivity	Human
Format	Purified
Clonality	Recombinant Rabbit Monoclonal
Isotype	Rabbit IgG, kappa
Clone Name	MUCN6-2R
Purity	Protein A affinity chromatography
UniProt	Q6W4X9
Localization	Cytoplasmic & secreted
Applications	Immunohistochemistry (FFPE) : 2-4ug/ml for 30 min at RT Prediluted IHC Only Format : incubate for 30 min at RT (1)
Limitations	This recombinant MUC6 antibody is available for research use only.



IHC staining of FFPE human pancreas with recombinant MUC6 antibody (clone MUCN6-2R). Required HIER: boil tissue sections in pH 9 10mM Tris with 1mM EDTA for 10-20 min followed by cooling at RT for 20 min.

Description

MUC6 or gastric mucin is a secreted glycoprotein that plays an essential role in epithelial cyto-protection from acid, proteases, pathogenic microorganisms, and mechanical trauma in the gastrointestinal tract. Mucin 6 expression is highest in the stomach and gall bladder, with lower expression in the terminal ileum and right colon. In gastric cancer, Mucin 6 has an altered expression. In normal stomach, Mucin 6 is associated with Lewis type 2; Mucin 6 is also expressed in gastric metaplasia, duodenum and pancreas. Mucin 6 is a secretory mucin, located in the deeper mucosal folds of human gall bladder, and its expression is altered with increasing degrees of inflammation.

Application Notes

The stated application concentrations are suggested starting points. Titration of the recombinant MUC6 antibody may be required due to differences in protocols and secondary/substrate sensitivity.

1. The prediluted format is supplied in a dropper bottle and is optimized for use in IHC. After epitope retrieval step (if required), drip mAb solution onto the tissue section and incubate at RT for 30 min.

Immunogen

A peptide from the Mucin-6 tandem repeat sequence was used as the immunogen for the recombinant MUC6 antibody.

Storage

Store the recombinant MUC6 antibody at 2-8oC (with azide) or aliquot and store at -20oC or colder (without azide).