

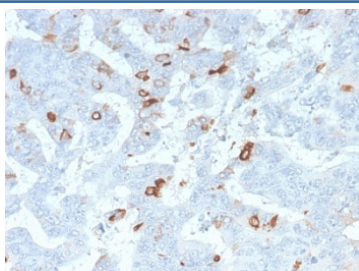
Recombinant MUC2 Antibody [clone MLP/2970R] (V7308)

Catalog No.	Formulation	Size
V7308-100UG	0.2 mg/ml in 1X PBS with 0.1 mg/ml BSA (US sourced) and 0.05% sodium azide	100 ug
V7308-20UG	0.2 mg/ml in 1X PBS with 0.1 mg/ml BSA (US sourced) and 0.05% sodium azide	20 ug
V7308SAF-100UG	1 mg/ml in 1X PBS; BSA free, sodium azide free	100 ug
V7308IHC-7ML	Prediluted in 1X PBS with 0.1 mg/ml BSA (US sourced) and 0.05% sodium azide; *For IHC use only*	7 ml

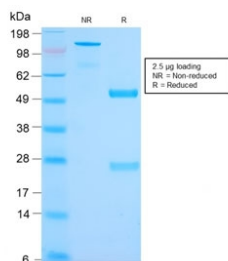
Recombinant **RABBIT MONOCLONAL**

[Bulk quote request](#)

Availability	1-3 business days
Species Reactivity	Human
Format	Purified
Host	Rabbit
Clonality	Recombinant Rabbit Monoclonal
Isotype	Rabbit IgG, kappa
Clone Name	MLP/2970R
Purity	Protein A affinity chromatography
UniProt	Q02817
Localization	Cytoplasmic and cell surface
Applications	Immunohistochemistry (FFPE) : 1-2ug/ml for 30 min at RT (1)
Limitations	This recombinant MUC2 antibody is available for research use only.



IHC staining of FFPE human colon tissue with recombinant MUC2 antibody (clone MLP/2970R). HIER: boil tissue sections in 10mM Tris-HCl buffer, pH 10, for 10-20 min and allow to cool before testing.



SDS-PAGE analysis of purified, BSA-free recombinant MUC2 antibody (clone MLP/2970R) as confirmation of integrity and purity.

Description

Recognizes a single glycoprotein of 520kDa, identified as mucin 2 (MUC2). This MAb shows no cross-reaction with human milk fat globule membranes, MUC1, or MUC3. Its epitope has been defined as GTQTP (GlyThrGlnThrPro). Mucins are high molecular weight glycoproteins, which constitute the major component of the mucus layer that protects the gastric epithelium. MUC2 is specifically expressed in goblet cells of the small intestine & colon; in about 65% of colonic carcinomas and about 40% of gastric carcinomas. MUC2 is rarely expressed outside of the GI tract with the exceptions of mucinous carcinoma of breast and clear cell-type carcinomas of the ovary.

Application Notes

Titering of the recombinant MUC2 antibody may be required for optimal performance.

1. The prediluted format is supplied in a dropper bottle and is optimized for use in IHC. After epitope retrieval step (if required), drip mAb solution onto the tissue section and incubate at RT for 30 min.

Immunogen

Recombinant human protein was used as the immunogen for the recombinant MUC2 antibody. Its epitope has been defined as GTQTP.

Storage

Store the recombinant MUC2 antibody at 2-8oC (with azide) or aliquot and store at -20oC or colder (without azide).