

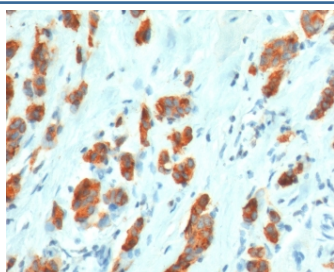
Recombinant MUC1 Antibody / Rabbit Monoclonal [clone MCN01-2R] (V3679)

Catalog No.	Formulation	Size
V3679-100UG	0.2 mg/ml in 1X PBS with 0.1 mg/ml BSA (US sourced) and 0.05% sodium azide	100 ug
V3679-20UG	0.2 mg/ml in 1X PBS with 0.1 mg/ml BSA (US sourced) and 0.05% sodium azide	20 ug
V3679SAF-100UG	1 mg/ml in 1X PBS; BSA free, sodium azide free	100 ug
V3679IHC-7ML	Prediluted in 1X PBS with 0.1 mg/ml BSA (US sourced) and 0.05% sodium azide; *For IHC use only*	7 ml

Recombinant RABBIT MONOCLONAL

[Bulk quote request](#)

Species Reactivity	Human
Format	Purified
Host	Rabbit
Clonality	Recombinant Rabbit Monoclonal
Isotype	Rabbit IgG, kappa
Clone Name	MCN01-2R
Purity	Protein A affinity chromatography
UniProt	P15941
Gene ID	4582
Localization	Cytoplasmic and cell surface
Applications	Immunohistochemistry (FFPE) : 1-2ug/ml for 30 min at RT Prediluted IHC Only Format : incubate for 30 min at RT (1)
Limitations	This recombinant MUC1 antibody is available for research use only.



IHC testing of FFPE human breast carcinoma with recombinant MUC1 antibody (clone MCN01-2R). Required HIER: boil tissue sections in pH 9 10mM Tris with 1mM EDTA for 10-20 min followed by cooling at RT for 20 min.

Description

Mucin-1/MUC1 protein is encoded by the MUC1 gene in humans. This gene encodes a membrane-bound protein that is a member of the mucin family. Family members are O-glycosylated proteins that play an essential role in forming protective mucous barriers on epithelial surfaces. MUC1 is a transmembrane protein normally expressed on the apical borders of secretory epithelial cells. Overexpression is often associated with colon, breast, ovarian, lung and pancreatic cancers. The dominant epitope of this MAb involves both amino acids as well as sugar moieties. Its epitope is destroyed by desialylation i.e. treatment with Neuraminidase.

Application Notes

Titration of the recombinant MUC1 may be required due to differences in protocols and secondary/substrate sensitivity.

1. The prediluted format is supplied in a dropper bottle and is optimized for use in IHC. After epitope retrieval step (if required), drip mAb solution onto the tissue section and incubate at RT for 30 min.

Immunogen

Human milk fat globule membranes were used as the immunogen for this recombinant MUC1 antibody.

Storage

Store the recombinant MUC1 antibody at 2-8oC (with azide) or aliquot and store at -20oC or colder (without azide).