

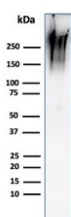
## Recombinant MUC1 Antibody / Mucin-1 [clone MUC1/2980R] (V7443)

Catalog No.	Formulation	Size
V7443-100UG	0.2 mg/ml in 1X PBS with 0.1 mg/ml BSA (US sourced) and 0.05% sodium azide	100 ug
V7443-20UG	0.2 mg/ml in 1X PBS with 0.1 mg/ml BSA (US sourced) and 0.05% sodium azide	20 ug
V7443SAF-100UG	1 mg/ml in 1X PBS; BSA free, sodium azide free	100 ug
V7443IHC-7ML	Prediluted in 1X PBS with 0.1 mg/ml BSA (US sourced) and 0.05% sodium azide; *For IHC use only*	7 ml

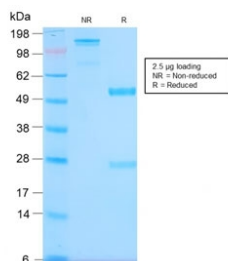
Recombinant **RABBIT MONOCLONAL**

[Bulk quote request](#)

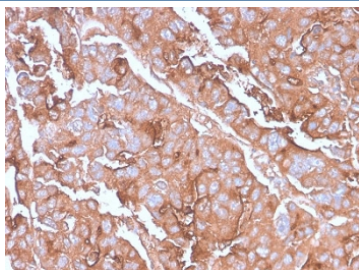
<b>Species Reactivity</b>	Human
<b>Format</b>	Purified
<b>Clonality</b>	Recombinant Rabbit Monoclonal
<b>Isotype</b>	Rabbit IgG, kappa
<b>Clone Name</b>	MUC1/2980R
<b>Purity</b>	Protein A affinity chromatography
<b>UniProt</b>	P15941
<b>Localization</b>	Cytoplasmic and cell surface
<b>Applications</b>	Immunohistochemistry (FFPE) : 1-2ug/ml for 30 min at RT Western Blot : 1-2ug/ml
<b>Limitations</b>	This recombinant MUC1 antibody is available for research use only.



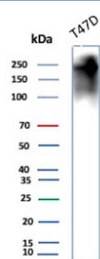
Western blot testing of human MCF7 cell lysate with recombinant MUC1 antibody (clone MUC1/2980R). This glycoprotein is commonly visualized between 120~500 kDa.



SDS-PAGE analysis of purified, BSA-free recombinant MUC1 antibody as confirmation of integrity and purity.



IHC testing of FFPE human colon carcinoma with recombinant MUC1 antibody. Required HIER: boil tissue sections in pH 9 10mM Tris with 1mM EDTA for 10-20 min followed by cooling at RT for 20 min.



Western blot testing of human T-47D cell lysate with recombinant MUC1 antibody (clone MUC1/2980R). This glycoprotein is commonly visualized between 120~500 kDa.

## Description

This MAb recognizes full-length MUC1 in a glycosylation-independent manner and can bind to the fully glycosylated protein. The dominant epitope of this MAb is APDTR in the VNTR region. It reacts with the core peptide of the MUC1 protein, which is a member of a family of mucin glycoproteins that are characterized by high carbohydrate content, O-linked oligosaccharides, high molecular weight (>200kDa) and an amino acid composition rich in serine, threonine, proline and glycine. The core protein contains a domain of 20 amino-acid tandem repeats that functions as multiple epitopes for the MAb. Incomplete glycosylation of some tumor-associated mucins may lead to variable unmasking of the multiple peptide epitopes leading to the observed differences in staining intensity between normal and malignant tissues. This MAb reacts with both normal and malignant epithelia of various tissues including breast and colon.

## Application Notes

Titration of the recombinant MUC1 may be required due to differences in protocols and secondary/substrate sensitivity.

1. The prediluted format is supplied in a dropper bottle and is optimized for use in IHC. After epitope retrieval step (if required), drip mAb solution onto the tissue section and incubate at RT for 30 min.

## Immunogen

Full length human protein was used as the immunogen for this recombinant MUC1 antibody.

## Storage

Store the recombinant MUC1 antibody at 2-8oC (with azide) or aliquot and store at -20oC or colder (without azide).

