

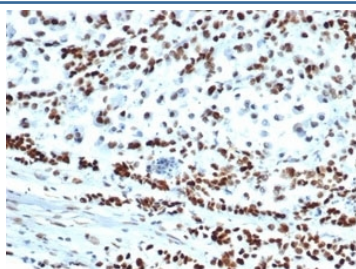
Recombinant MSH6 Antibody [clone MSH6/6654R] (V9182)

Catalog No.	Formulation	Size
V9182-100UG	0.2 mg/ml in 1X PBS with 0.1 mg/ml BSA (US sourced), 0.05% sodium azide	100 ug
V9182-20UG	0.2 mg/ml in 1X PBS with 0.1 mg/ml BSA (US sourced), 0.05% sodium azide	20 ug
V9182SAF-100UG	1 mg/ml in 1X PBS; BSA free, sodium azide free	100 ug

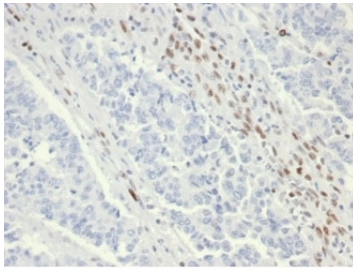
Recombinant **RABBIT MONOCLONAL**

[Bulk quote request](#)

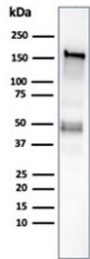
Availability	1-3 business days
Species Reactivity	Human
Format	Purified
Host	Rabbit
Clonality	Recombinant Rabbit Monoclonal
Isotype	Rabbit IgG
Clone Name	MSH6/6654R
Purity	Protein A/G affinity
UniProt	P52701
Localization	Nuclear
Applications	ELISA (order BSA-free Format For Coating) : Western Blot : 1-2ug/ml Immunohistochemistry (FFPE) : 1-2ug/ml
Limitations	This recombinant MSH6 antibody is available for research use only.



IHC staining of FFPE human colon carcinoma tissue with recombinant MSH6 antibody (clone MSH6/6654R). HIER: boil tissue sections in pH 9 10mM Tris with 1mM EDTA for 20 min and allow to cool before testing.



IHC staining of FFPE human colon tissue from a patient with Lynch syndrome using recombinant MSH6 antibody (clone MSH6/6654R). HIER: boil tissue sections in pH 9 10mM Tris with 1mM EDTA for 20 min and allow to cool before testing.



Western blot analysis of human HCT-116 cell lysate using recombinant MSH6 antibody (clone MSH6/6654R). Expected molecular weight: 120-160 kDa depending on phosphorylation level.

Description

MSH6 is a mismatch repair protein which is deficient in a high proportion of patients with microsatellite instability (MSI-H).

Application Notes

Optimal dilution of the recombinant MSH6 antibody should be determined by the researcher.

Immunogen

A portion of amino acids 1-100 was used as the immunogen for the recombinant MSH6 antibody.

Storage

Aliquot the recombinant MSH6 antibody and store frozen at -20°C or colder. Avoid repeated freeze-thaw cycles.