

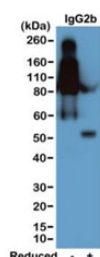
Recombinant Mouse IgG2b Antibody (Biotin Conjugate) [clone RM108] (R20167BTN)

Catalog No.	Formulation	Size
R20167BTN-50UG	1 mg/ml in PBS with 50% glycerol, 1% BSA and 0.09% sodium azide	50 ug

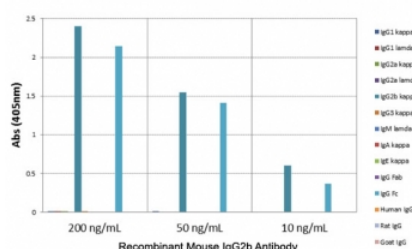
Recombinant RABBIT MONOCLONAL

[Bulk quote request](#)

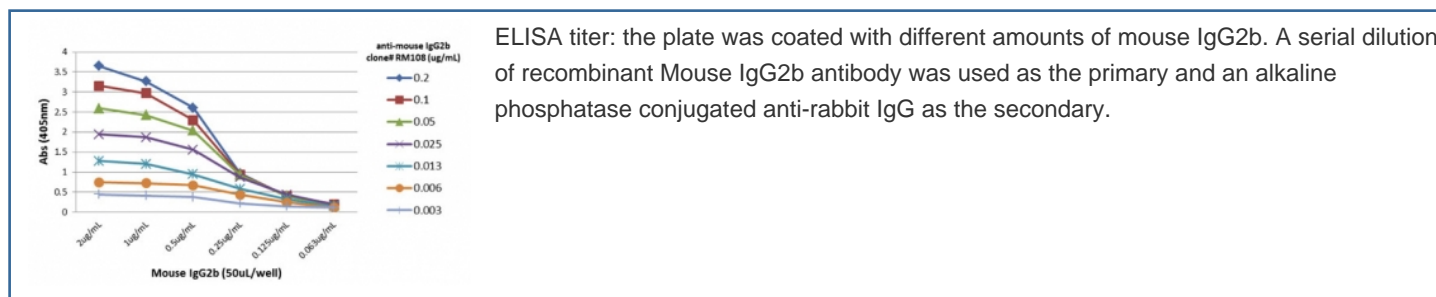
Availability	1-3 business days
Species Reactivity	Mouse
Format	Biotin Conjugate
Clonality	Recombinant Rabbit Monoclonal
Isotype	Rabbit IgG
Clone Name	RM108
Purity	Protein A purified from animal origin-free supernatant
UniProt	P01867
Gene ID	16016
Applications	ELISA : 0.005ug/ml-0.2ug/ml Western Blot (stronger On Non-reduced Samples) : 0.1-0.5ug/ml
Limitations	This recombinant Mouse IgG2b antibody is available for research use only.



Western blot of nonreduced(-) and reduced(+) mouse IgG2b (20ng/lane), using 0.2ug/ml of the recombinant Mouse IgG2b antibody. This antibody reacts to nonreduced IgG2b (~150 kDa) much stronger than the reduced form (~50 kDa).



ELISA of mouse immunoglobulins shows the recombinant Mouse IgG2b antibody reacts to the Fc region of mouse IgG2b; no cross reactivity with IgG1, IgG2a, IgG3, IgM, IgA, IgE, human IgG, rat IgG, or goat IgG.



ELISA titration: the plate was coated with different amounts of mouse IgG2b. A serial dilution of recombinant Mouse IgG2b antibody was used as the primary and an alkaline phosphatase conjugated anti-rabbit IgG as the secondary.

Description

This recombinant Mouse IgG2b antibody reacts to the Fc region of mouse IgG2b. No cross reactivity with mouse IgG1, IgG2a, IgG3, IgM, IgA, IgE, human IgG, rat IgG, or goat IgG.

Application Notes

The stated application concentrations are suggested starting points. Titration of the recombinant Mouse IgG2b antibody may be required due to differences in protocols and secondary/substrate sensitivity.

Immunogen

Mouse IgG2b was used as the immunogen for this recombinant Mouse IgG2b antibody.

Storage

Store the recombinant Mouse IgG2b antibody at -20oC.