

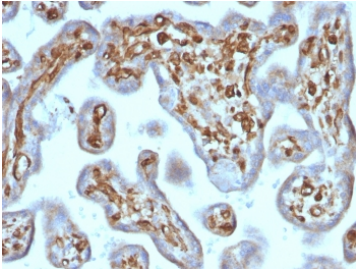
## Recombinant Moesin Antibody [clone rMSN/492] (V3650)

Catalog No.	Formulation	Size
V3650-100UG	0.2 mg/ml in 1X PBS with 0.1 mg/ml BSA (US sourced) and 0.05% sodium azide	100 ug
V3650-20UG	0.2 mg/ml in 1X PBS with 0.1 mg/ml BSA (US sourced) and 0.05% sodium azide	20 ug
V3650SAF-100UG	1 mg/ml in 1X PBS; BSA free, sodium azide free	100 ug
V3650IHC-7ML	Prediluted in 1X PBS with 0.1 mg/ml BSA (US sourced) and 0.05% sodium azide; *For IHC use only*	7 ml

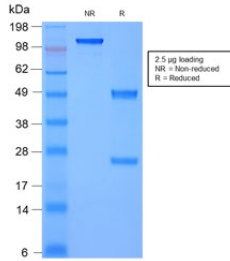
Recombinant **MOUSE MONOCLONAL**

[Bulk quote request](#)

<b>Availability</b>	1-3 business days
<b>Species Reactivity</b>	Human
<b>Format</b>	Purified
<b>Host</b>	Mouse
<b>Clonality</b>	Recombinant Mouse Monoclonal
<b>Isotype</b>	Mouse IgG1, kappa
<b>Clone Name</b>	rMSN/492
<b>Purity</b>	Protein G affinity chromatography
<b>UniProt</b>	P26038
<b>Localization</b>	Cytoplasmic & cell surface
<b>Applications</b>	Flow Cytometry : 1-2ug/10 <sup>6</sup> cells Immunofluorescence : 2-4ug/ml Western Blot : 1-2ug/ml Immunohistochemistry (FFPE) : 1-2ug/ml for 30 min at RT
<b>Limitations</b>	This recombinant Moesin antibody is available for research use only.



IHC testing of FFPE human placenta tissue with recombinant Moesin antibody (clone rMSN/492). Required HIER: boil tissue sections in pH6, 10mM citrate buffer, for 10-20 min followed by cooling at RT for 20 min.



SDS-PAGE analysis of purified, BSA-free recombinant Moesin antibody (clone rMSN/492) as confirmation of integrity and purity.

## Description

Recognizes 78kDa moesin protein. Moesin, a member of the talin-4.1 superfamily, is a linking protein of the sub-membranous actin cytoskeleton. It is expressed in variable amounts in cells of different phenotypes such as macrophages, lymphocytes, fibroblastic, endothelial, epithelial, and neuronal cell lines but not in blood cells. The ERM proteins, ezrin, radixin, and moesin are involved in a variety of cellular functions, such as cell adhesion, migration, and the organization of cell surface structures, and are highly homologous, both in protein sequence and in functional activity, with merlin/schwannomin, a neurofibromatosis-2-associated tumor-suppressor protein. Cell lines of epithelial and mesothelial origin contain both moesin and radixin whereas cells of endothelial and lymphoid origin express moesin.

## Application Notes

Optimal dilution of the recombinant Moesin antibody should be determined by the researcher.

1. The prediluted format is supplied in a dropper bottle and is optimized for use in IHC. After epitope retrieval step (if required), drip mAb solution onto the tissue section and incubate at RT for 30 min.

## Immunogen

Recombinant full-length human protein was used as the immunogen for the recombinant Moesin antibody.

## Storage

Store the recombinant Moesin antibody at 2-8oC (with azide) or aliquot and store at -20oC or colder (without azide).