

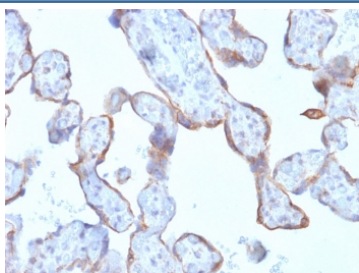
Recombinant MMP3 Antibody [clone rMMP3/1730] (V3642)

Catalog No.	Formulation	Size
V3642-100UG	0.2 mg/ml in 1X PBS with 0.1 mg/ml BSA (US sourced) and 0.05% sodium azide	100 ug
V3642-20UG	0.2 mg/ml in 1X PBS with 0.1 mg/ml BSA (US sourced) and 0.05% sodium azide	20 ug
V3642SAF-100UG	1 mg/ml in 1X PBS; BSA free, sodium azide free	100 ug
V3642IHC-7ML	Prediluted in 1X PBS with 0.1 mg/ml BSA (US sourced) and 0.05% sodium azide; *For IHC use only*	7 ml

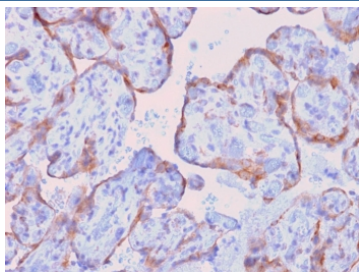
Recombinant **MOUSE MONOCLONAL**

[Bulk quote request](#)

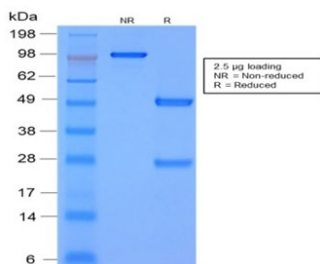
Availability	1-3 business days
Species Reactivity	Human
Format	Purified
Host	Mouse
Clonality	Recombinant Mouse Monoclonal
Isotype	Mouse IgG1, kappa
Clone Name	rMMP3/1730
Purity	Protein G affinity chromatography
UniProt	P08254
Localization	Cytoplasmic, secreted
Applications	Immunohistochemistry (FFPE) : 1-2ug/ml for 30 min at RT
Limitations	This recombinant MMP3 antibody is available for research use only.



IHC testing of FFPE human placenta with recombinant MMP3 antibody (clone rMMP3/1730). Required HIER: boil tissue sections in pH 9 10mM Tris with 1mM EDTA for 10-20 min followed by cooling at RT for 20 min.



IHC testing of FFPE human placenta with recombinant MMP3 antibody (clone rMMP3/1730). Required HIER: boil tissue sections in pH 9 10mM Tris with 1mM EDTA for 10-20 min followed by cooling at RT for 20 min.



SDS-PAGE analysis of purified, BSA-free recombinant MMP3 antibody (clone rMMP3/1730) as confirmation of integrity and purity.

Description

The matrix metalloproteinases (MMP) are a family of peptidase enzymes responsible for the degradation of extracellular matrix components, including collagen, gelatin, fibronectin, laminin and proteoglycan. Transcription of MMP genes is differentially activated by phorbol ester, lipopolysaccharide (LPS) or staphylococcal enterotoxin B (SEB). MMP catalysis requires both calcium and zinc. MMP3, MMP10 and MMP11 (also designated stromelysin-1, 2 and 3, respectively) activate procollagenase. MMP3 activation of procollagenase can occur via two pathways. Direct activation by MMP3 is slow and activation by MMP3 in conjunction with tissue or plasma proteinases is rapid. MMP10 is expressed in small intestine, and at lower levels in lung and heart. MMP11 is specifically expressed in stromal cells of breast carcinomas and contributes to epithelial cell malignancies.

Application Notes

Optimal dilution of the recombinant MMP3 antibody should be determined by the researcher.

1. The prediluted format is supplied in a dropper bottle and is optimized for use in IHC. After epitope retrieval step (if required), drip mAb solution onto the tissue section and incubate at RT for 30 min.

Immunogen

Amino acids 317-327 were used as the immunogen for the recombinant MMP3 antibody.

Storage

Store the recombinant MMP3 antibody at 2-8°C (with azide) or aliquot and store at -20°C or colder (without azide).