

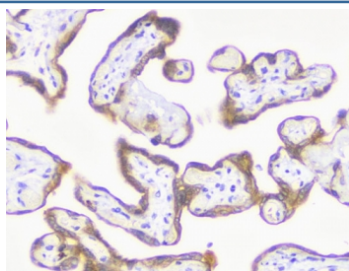
Recombinant MMP3 Antibody [clone MXMP3-1R] (V3977)

Catalog No.	Formulation	Size
V3977-100UG	0.2 mg/ml in 1X PBS with 0.1 mg/ml BSA (US sourced) and 0.05% sodium azide	100 ug
V3977-20UG	0.2 mg/ml in 1X PBS with 0.1 mg/ml BSA (US sourced) and 0.05% sodium azide	20 ug
V3977SAF-100UG	1 mg/ml in 1X PBS; BSA free, sodium azide free	100 ug
V3977IHC-7ML	Prediluted in 1X PBS with 0.1 mg/ml BSA (US sourced) and 0.05% sodium azide; *For IHC use only*	7 ml

Recombinant **MOUSE MONOCLONAL**

[Bulk quote request](#)

Availability	1-3 business days
Species Reactivity	Human
Format	Purified
Clonality	Recombinant Mouse Monoclonal
Isotype	Mouse IgG1, kappa
Clone Name	MXMP3-1R
Purity	Protein G affinity chromatography
UniProt	P08254
Localization	Cytoplasmic, secreted
Applications	Immunohistochemistry (FFPE) : 1-2ug/ml for 30 min at RT Prediluted IHC Only Format : incubate for 30 min at RT (1)
Limitations	This recombinant MMP3 antibody is available for research use only.



IHC testing of FFPE human placental tissue with recombinant MMP3 antibody (clone MXMP3-1R). Required HIER: boil tissue sections in pH 9 10mM Tris with 1mM EDTA for 10-20 min followed by cooling at RT for 20 min.

Description

Proteins of the matrix metalloproteinase (MMP) family are involved in the breakdown of extracellular matrix in normal physiological processes, such as embryonic development, reproduction, and tissue remodeling, as well as in disease processes, such as arthritis and metastasis. Most MMP's are secreted as inactive proproteins which are activated when cleaved by extracellular proteinases. The MMP3 gene encodes the enzyme Stromelysin-1, which degrades fibronectin, laminin, collagens III, IV, IX, and X, and cartilage proteoglycans. The enzyme is thought to be involved in wound repair, progression of atherosclerosis, and tumor initiation. The gene is part of a cluster of MMP genes which localize to chromosome 11q22.3. [RefSeq]

Application Notes

Optimal dilution of the recombinant MMP3 antibody should be determined by the researcher.

1. The prediluted format is supplied in a dropper bottle and is optimized for use in IHC. After epitope retrieval step (if required), drip mAb solution onto the tissue section and incubate at RT for 30 min.

Immunogen

Amino acids 317-327 were used as the immunogen for the recombinant MMP3 antibody.

Storage

Store the recombinant MMP3 antibody at 2-8oC (with azide) or aliquot and store at -20oC or colder (without azide).