

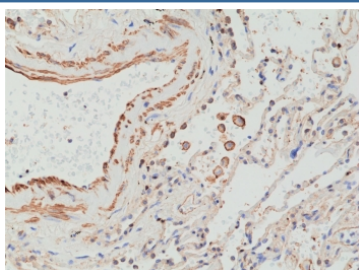
Recombinant MMP12 Antibody [clone RM381] (R20399)

Catalog No.	Formulation	Size
R20399-0.1ML	Antibody in PBS with 50% glycerol, 1% BSA and 0.09% sodium azide	100 ul

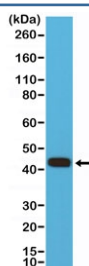
Recombinant **RABBIT MONOCLONAL**

[Bulk quote request](#)

Availability	1-3 business days
Species Reactivity	Human
Format	Purified
Clonality	Recombinant Rabbit Monoclonal
Isotype	Rabbit IgG
Clone Name	RM381
Purity	Protein A purified from animal origin-free supernatant
UniProt	P39900
Applications	Immunohistochemistry (FFPE) : 1:1000-1:2500 Western Blot : 1:200-1:1000
Limitations	This recombinant MMP12 antibody is available for research use only.



IHC staining of FFPE human lung tissue with recombinant MMP12 antibody at 1:2500.



Western blot testing of human HEK293 cell lysate with recombinant MMP12 antibody at 1:500 dilution. Predicted molecular weight: ~55 kDa (pro form), ~45 kDa and ~22 kDa (active forms).

Description

This antibody reacts to human Matrix metalloproteinase-12 (MMP-12).

Application Notes

The stated application concentrations are suggested starting points. Titration of the recombinant MMP12 antibody may be required due to differences in protocols and secondary/substrate sensitivity.

Immunogen

A peptide corresponding to C-terminus of human Matrix metalloproteinase-12 (MMP-12) was used as the immunogen for the recombinant MMP12 antibody.

Storage

Store the recombinant MMP12 antibody at -20oC.