

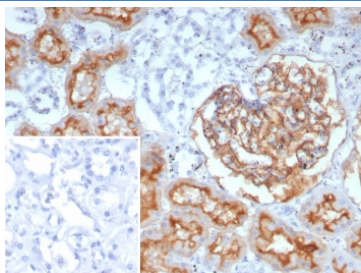
Recombinant MME Antibody / CD10 / CALLA / Neprilysin [clone rMME/9377] (V5446)

Catalog No.	Formulation	Size
V5446-100UG	0.2 mg/ml in 1X PBS with 0.1 mg/ml BSA (US sourced), 0.05% sodium azide	100 ug
V5446-20UG	0.2 mg/ml in 1X PBS with 0.1 mg/ml BSA (US sourced), 0.05% sodium azide	20 ug
V5446SAF-100UG	1 mg/ml in 1X PBS; BSA free, sodium azide free	100 ug

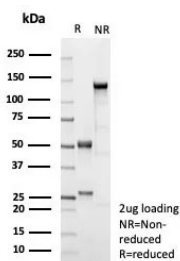
Recombinant MOUSE MONOCLONAL

[Bulk quote request](#)

Availability	1-3 business days
Species Reactivity	Human
Format	Purified
Host	Mouse
Clonality	Recombinant Mouse Monoclonal
Isotype	Mouse IgG2b, kappa
Clone Name	rMME/9377
Purity	Protein A/G affinity
UniProt	P08473
Localization	Cytoplasm, Cell membrane
Applications	Immunohistochemistry (FFPE) : 1-2ug/ml
Limitations	This recombinant MME antibody is available for research use only.



IHC staining of FFPE human prostate tissue with recombinant MME antibody (clone rMME/9377). Inset: PBS used in place of primary Ab (secondary Ab negative control).
HIER: boil tissue sections in pH 9 10mM Tris with 1mM EDTA for 20 min and allow to cool before testing.



SDS-PAGE analysis of purified, BSA-free recombinant MME antibody (clone rMME/9377) as confirmation of integrity and purity.

Description

Recognizes a 100kDa glycoprotein, identified as CD10, also known as Membrane Metalloendopeptidase (MME), Common Acute Lymphocytic Leukemia Antigen (CALLA) and Neprilysin. It is a cell surface enzyme with neutral metalloendopeptidase activity, which inactivates a variety of biologically active peptides. CD10 is expressed on the cells of lymphoblastic, Burkitt's, and follicular germinal center lymphomas, and on cells from patients with chronic myelocytic leukemia (CML). It is also expressed on the surface of normal early lymphoid progenitor cells, immature B cells within adult bone marrow and germinal center B cells within lymphoid tissue. CD10 is also present on breast myoepithelial cells, bile canaliculi, fibroblasts, with especially high expression on the brush border of kidney and gut epithelial cells.

Application Notes

Optimal dilution of the recombinant MME antibody should be determined by the researcher.

Immunogen

Recombinant human CD10/Neprilysin protein fragment (amino acids 500-750) was used as the immunogen for the recombinant MME antibody.

Storage

Aliquot the recombinant MME antibody and store frozen at -20°C or colder. Avoid repeated freeze-thaw cycles.