

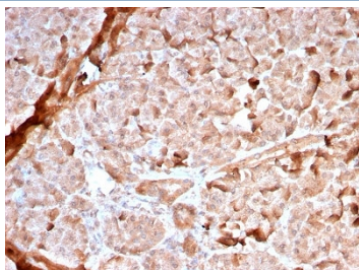
## Recombinant Mitochondrial Marker Antibody [clone MTC02/2860R] (V7473)

Catalog No.	Formulation	Size
V7473-100UG	0.2 mg/ml in 1X PBS with 0.1 mg/ml BSA (US sourced) and 0.05% sodium azide	100 ug
V7473-20UG	0.2 mg/ml in 1X PBS with 0.1 mg/ml BSA (US sourced) and 0.05% sodium azide	20 ug
V7473SAF-100UG	1 mg/ml in 1X PBS; BSA free, sodium azide free	100 ug
V7473IHC-7ML	Prediluted in 1X PBS with 0.1 mg/ml BSA (US sourced) and 0.05% sodium azide; *For IHC use only*	7 ml

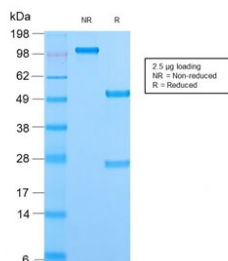
Recombinant **RABBIT MONOCLONAL**

[Bulk quote request](#)

<b>Species Reactivity</b>	Human
<b>Format</b>	Purified
<b>Clonality</b>	Recombinant Rabbit Monoclonal
<b>Isotype</b>	Rabbit IgG, kappa
<b>Clone Name</b>	MTC02/2860R
<b>Purity</b>	Protein A affinity chromatography
<b>UniProt</b>	Unknown
<b>Localization</b>	Mitochondria in cytoplasm
<b>Applications</b>	Immunohistochemistry (FFPE) : 1-2ug/ml for 30 min at RT
<b>Limitations</b>	This recombinant Mitochondrial Marker antibody is available for research use only.



IHC staining of FFPE human pancreas with recombinant Mitochondrial Marker antibody (clone MTC02/2860R). HIER: boil tissue sections in 1mM EDTA buffer, pH 8.5-9.5, for 10-20 min followed by cooling at RT prior to testing.



SDS-PAGE analysis of purified, BSA-free recombinant Mitochondrial Marker antibody (clone MTC02/2860R) as confirmation of integrity and purity.

## Description

This MAb recognizes a 60kDa antigen associated with the mitochondria in human cells. It can be used to stain mitochondria in cell or tissue preparations and can be used as a mitochondrial marker in subcellular fractions. It produces a spaghetti-like pattern in normal and malignant cells. This antibody is an excellent marker for human cells in xenographic model research. It reacts specifically with human cells, including neurons and embryonic stem cells. Immunostaining pattern with anti-mitochondrial MAb has been reported as a useful discriminatory adjunct in the complex differential diagnosis of granular renal cell tumors.

## Application Notes

The concentration stated for each application is a general starting point. Variations in protocols, secondaries and substrates may require the recombinant Mitochondrial Marker antibody to be titrated up or down for optimal performance.

1. The prediluted format is supplied in a dropper bottle and is optimized for use in IHC. After epitope retrieval step (if required), drip mAb solution onto the tissue section and incubate at RT for 30 min.

## Immunogen

A semi-purified mitochondria preparation was used as the immunogen for this recombinant Mitochondrial Marker antibody.

## Storage

Store the recombinant Mitochondrial Marker antibody at 2-8oC (with azide) or aliquot and store at -20oC or colder (without azide).