

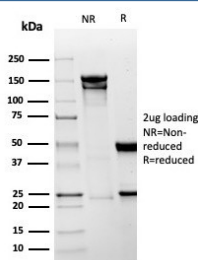
Recombinant Mesothelin Antibody / MSLN [clone MSLN/6443R] (V4426)

Catalog No.	Formulation	Size
V4426-100UG	0.2 mg/ml in 1X PBS with 0.1 mg/ml BSA (US sourced), 0.05% sodium azide	100 ug
V4426-20UG	0.2 mg/ml in 1X PBS with 0.1 mg/ml BSA (US sourced), 0.05% sodium azide	20 ug
V4426SAF-100UG	1 mg/ml in 1X PBS; BSA free, sodium azide free	100 ug

Recombinant **RABBIT MONOCLONAL**

[Bulk quote request](#)

Availability	1-3 business days
Species Reactivity	Human
Format	Purified
Clonality	Recombinant Rabbit Monoclonal
Isotype	Rabbit IgG, kappa
Clone Name	MSLN/6443R
Purity	Protein A/G affinity
UniProt	Q13421
Localization	Cell surface, Secreted
Applications	Immunohistochemistry (FFPE) : 1-2ug/ml for 30 minutes at RT
Limitations	This recombinant Mesothelin antibody is available for research use only.



SDS-PAGE analysis of purified, BSA-free recombinant Mesothelin antibody (clone MSLN/6443R) as confirmation of integrity and purity.

Description

Mesothelin is a 40kDa glycosyl-phosphatidylinositol-anchored glycoprotein cleaved from a 69kDa precursor protein. Mesothelin immunoreactivity is high in cancers of the ovary (serous papillary, endometrioid and undifferentiated) and pancreas, with less frequent staining seen in adenocarcinomas of the endometrium, lung and stomach/esophagus. Mesothelin is one of the most sensitive markers for mesothelioma.

Application Notes

Optimal dilution of the recombinant Mesothelin antibody should be determined by the researcher.

Immunogen

A recombinant partial protein sequence (within amino acids 273-407) from the human protein was used as the immunogen for the recombinant Mesothelin antibody.

Storage

Aliquot the recombinant Mesothelin antibody and store frozen at -20oC or colder. Avoid repeated freeze-thaw cycles.